

Hubbard Hall Photo Log



Asbestos-containing steam/condensate supply and return  
pipe joint and hanger insulation  
and  
Non asbestos-containing canvas wrap on fiberglass pipe straight insulation

For more information contact MSU Environmental Health and Safety – (517) 353-8956

Hubbard Hall Photo Log



Asbestos-containing 9" x 9" tan floor tile with swirl pattern  
and associated mastic

For more information contact MSU Environmental Health and Safety – (517) 353-8956

Hubbard Hall Photo Log



Non asbestos-containing 12" x 12" white ceiling tile with fissures and associated glue pods

For more information contact MSU Environmental Health and Safety – (517) 353-8956

Hubbard Hall Photo Log



Non asbestos-containing textured plaster

For more information contact MSU Environmental Health and Safety – (517) 353-8956

Hubbard Hall Photo Log



Asbestos-containing drain pipe joint and hanger insulation

For more information contact MSU Environmental Health and Safety – (517) 353-8956

Hubbard Hall Photo Log



Non asbestos-containing 4" tan cove molding and associated mastic  
and  
Non asbestos-containing 12" x 12" tan floor tile with marble pattern and  
associated mastic

For more information contact MSU Environmental Health and Safety – (517) 353-8956

Hubbard Hall Photo Log



Asbestos-containing plaster

For more information contact MSU Environmental Health and Safety – (517) 353-8956

Hubbard Hall Photo Log



Non asbestos-containing tan vinyl stair tread with small square pattern  
and associated mastic

For more information contact MSU Environmental Health and Safety – (517) 353-8956



## Hubbard Hall Photo Log



Non asbestos-containing 4" brown cove molding and associated mastic

For more information contact MSU Environmental Health and Safety – (517) 353-8956

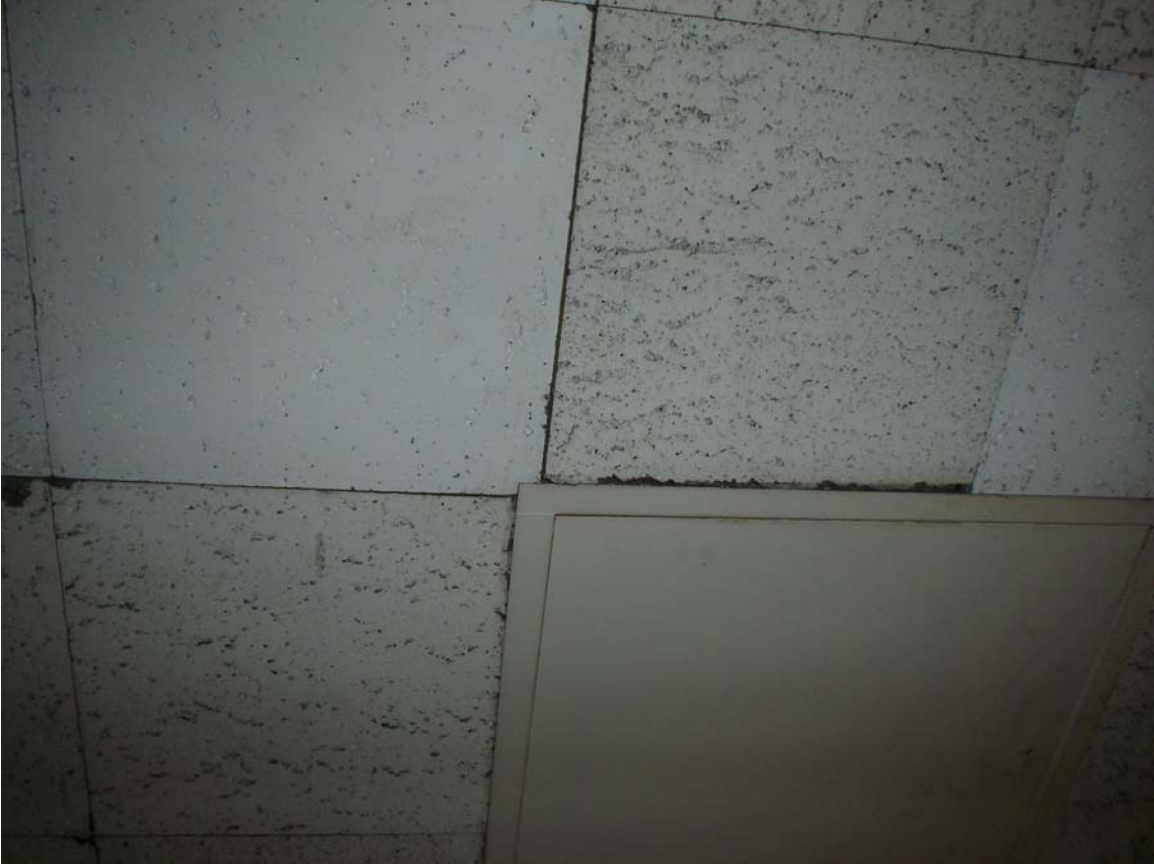
Hubbard Hall Photo Log



Non asbestos-containing 4" gray cove molding and associated mastic

For more information contact MSU Environmental Health and Safety – (517) 353-8956

Hubbard Hall Photo Log



Non asbestos-containing 12" x 12" white splined ceiling tile  
with pin holes and fissures

For more information contact MSU Environmental Health and Safety – (517) 353-8956

Hubbard Hall Photo Log



Non asbestos-containing 9" x 9" tan floor tile with cream and rust streaks and associated mastic

For more information contact MSU Environmental Health and Safety – (517) 353-8956

Hubbard Hall Photo Log



Non asbestos-containing beige multi-colored flooring material  
and associated mastic

For more information contact MSU Environmental Health and Safety – (517) 353-8956

Hubbard Hall Photo Log



Non asbestos-containing 12" x 12" tan floor tile with cream and rust streaks  
and associated mastic

For more information contact MSU Environmental Health and Safety – (517) 353-8956

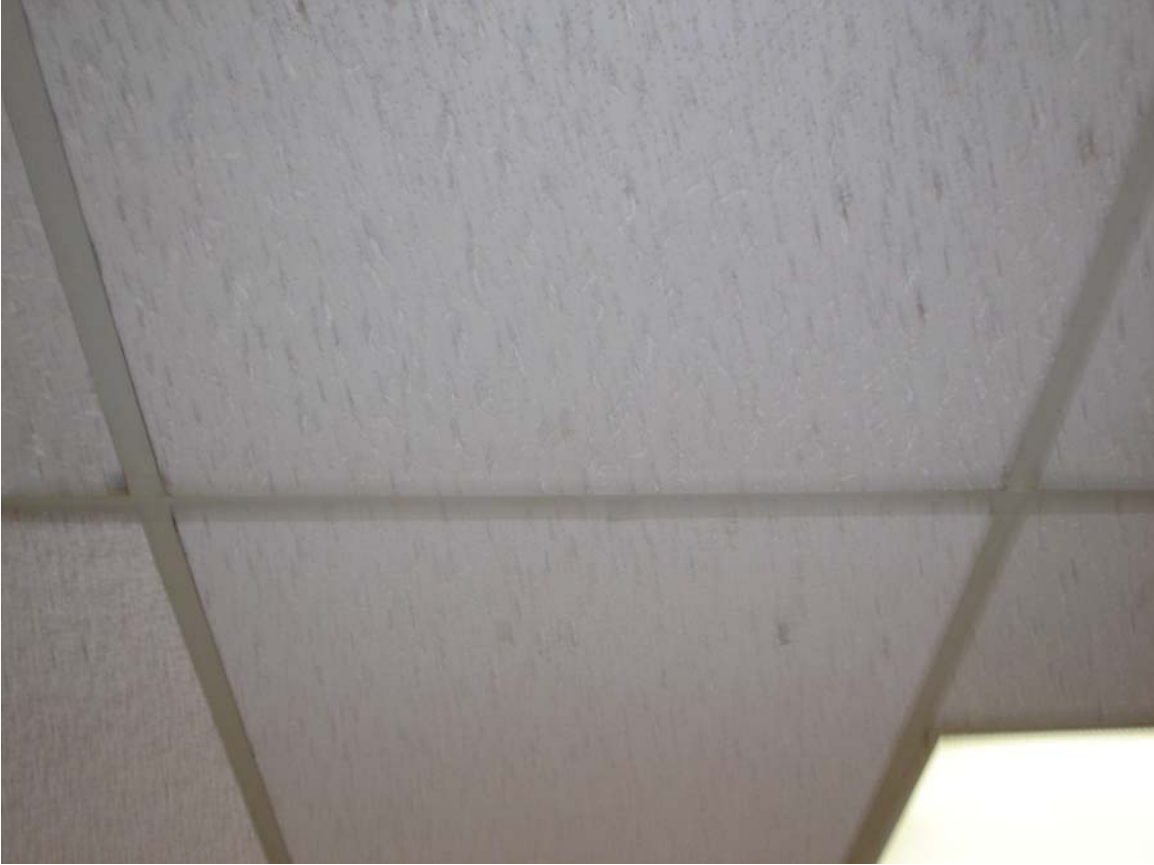
Hubbard Hall Photo Log



Non asbestos-containing 6" brown cove molding and associated mastic

For more information contact MSU Environmental Health and Safety – (517) 353-8956

Hubbard Hall Photo Log



Non asbestos-containing 2' x 2' white lay-in ceiling tile  
with pin holes and fissures

For more information contact MSU Environmental Health and Safety – (517) 353-8956



Hubbard Hall Photo Log



Non asbestos-containing tan linoleum with small squares  
and associated mastic

For more information contact MSU Environmental Health and Safety – (517) 353-8956

Hubbard Hall Photo Log



Non asbestos-containing 12" x 12" cream floor tile with marble pattern  
and associated mastic

For more information contact MSU Environmental Health and Safety – (517) 353-8956

Hubbard Hall Photo Log



Non asbestos-containing 4” black cove molding and associated mastic  
and  
Non asbestos-containing 12” x 12” light gray floor tile with marble pattern  
and associated mastic

For more information contact MSU Environmental Health and Safety – (517) 353-8956

Hubbard Hall Photo Log



Assumed asbestos-containing fire door and frame

For more information contact MSU Environmental Health and Safety – (517) 353-8956

Hubbard Hall Photo Log



Non asbestos-containing 2' x 2' white drop-in ceiling tile with light texture

For more information contact MSU Environmental Health and Safety – (517) 353-8956

Hubbard Hall Photo Log



Non asbestos-containing purple linoleum flooring and associated mastic

For more information contact MSU Environmental Health and Safety – (517) 353-8956

Hubbard Hall Photo Log



Non asbestos-containing 12" x 12" brown floor tile with ripple effect  
and associated mastic

For more information contact MSU Environmental Health and Safety – (517) 353-8956

Hubbard Hall Photo Log



Non asbestos-containing 9" x 9" tan floor tile with cream and rust streaks and associated mastic

For more information contact MSU Environmental Health and Safety – (517) 353-8956



Hubbard Hall Photo Log



Non asbestos-containing 9” x 9” mustard floor tile with cream and rust streaks and associated mastic

For more information contact MSU Environmental Health and Safety – (517) 353-8956

Hubbard Hall Photo Log



Asbestos-containing electrical insulation cloth

For more information contact MSU Environmental Health and Safety – (517) 353-8956

Hubbard Hall Photo Log



Non asbestos-containing spray-on fireproofing

For more information contact MSU Environmental Health and Safety – (517) 353-8956