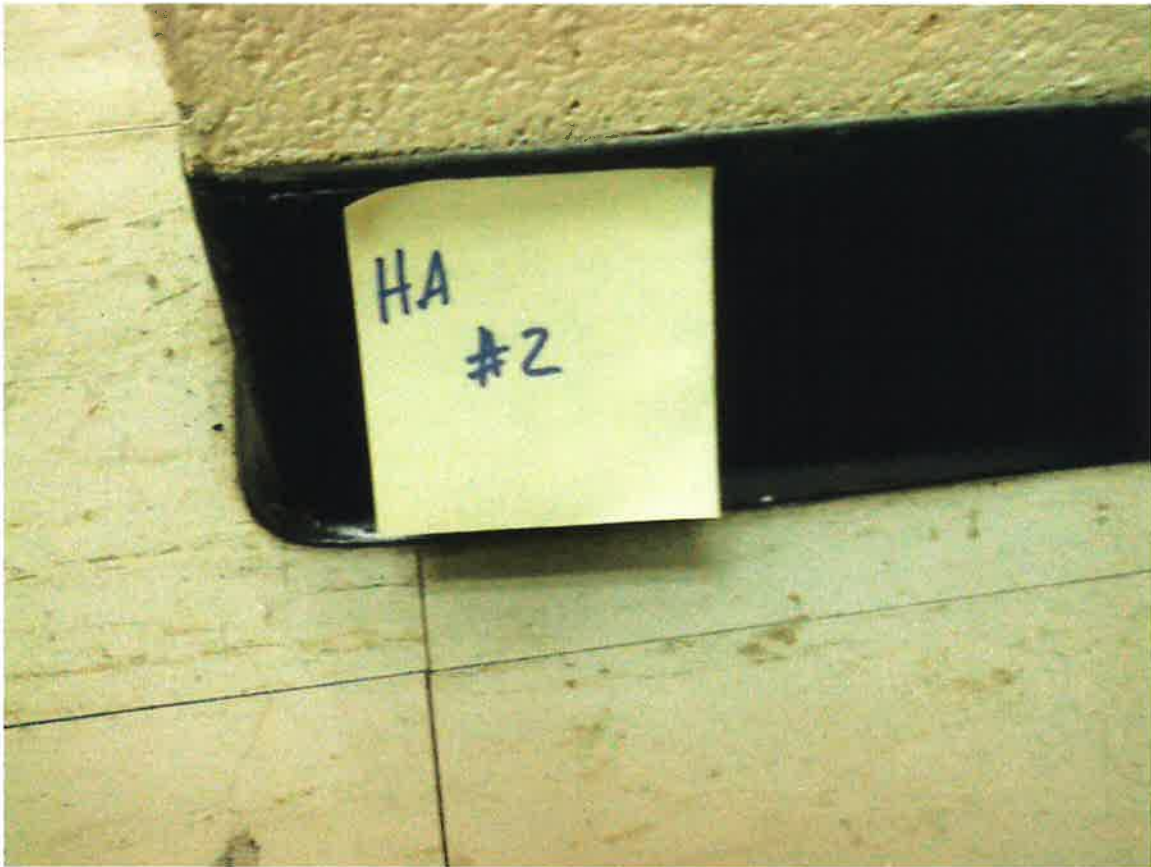


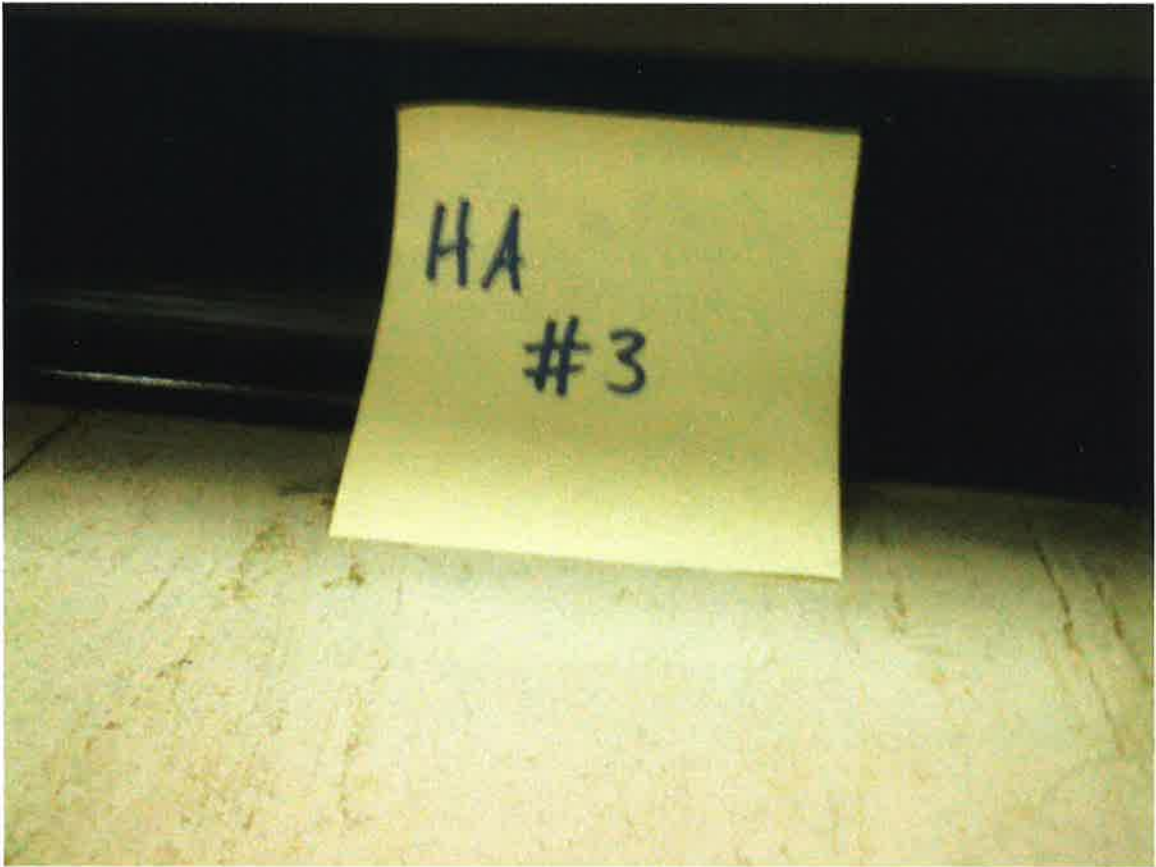


HA #1 – Non asbestos-containing 9" x 9" gray floor tile
with dark green streaks and associated mastic

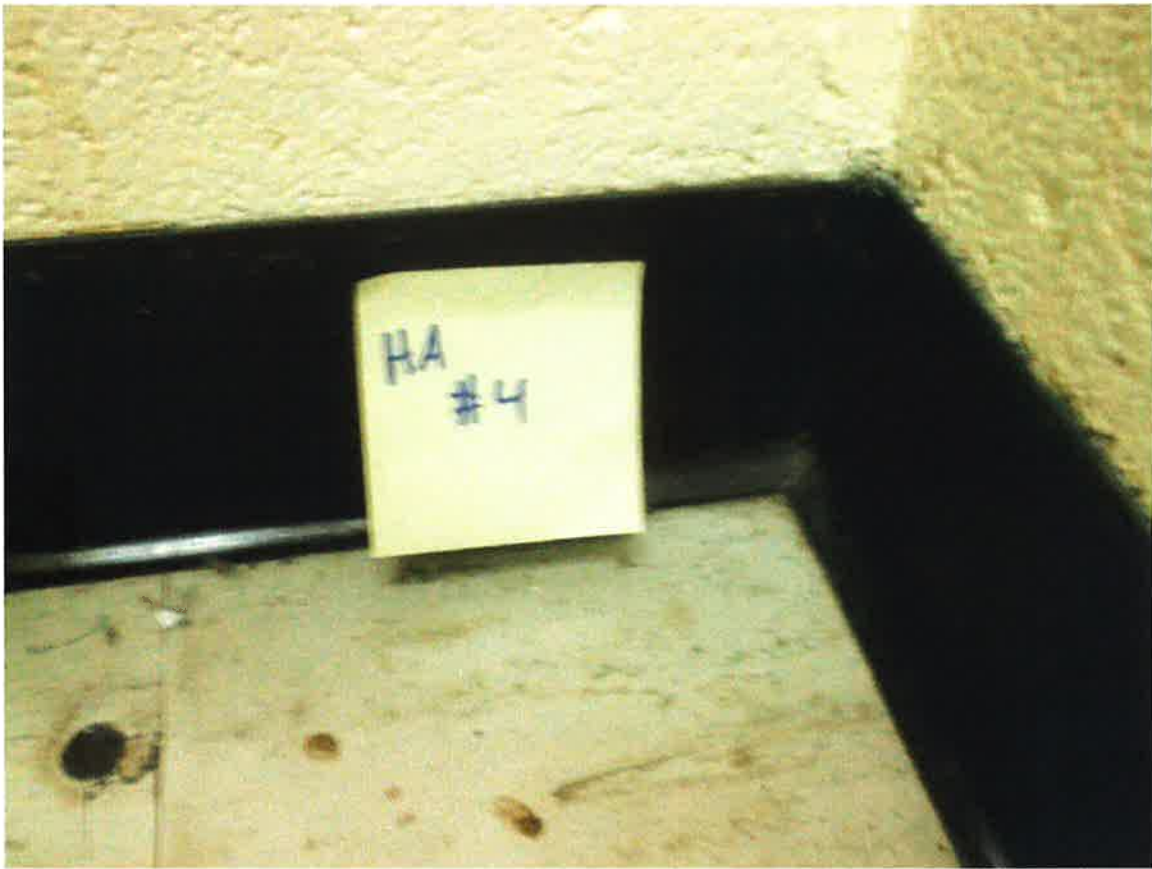
Note: Tile contains <1% asbestos and should be treated as ACM.



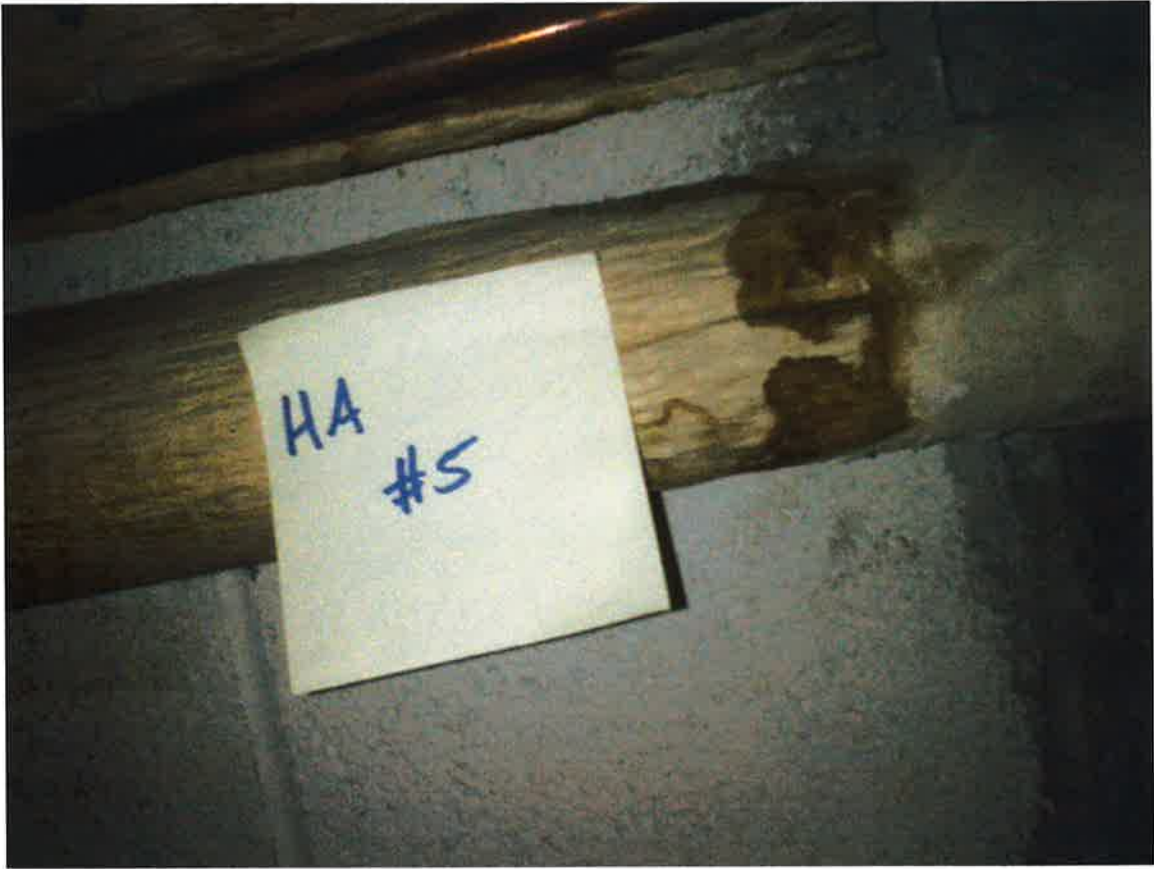
HA #2 – Non asbestos-containing 4" black cove molding
and associated mastic



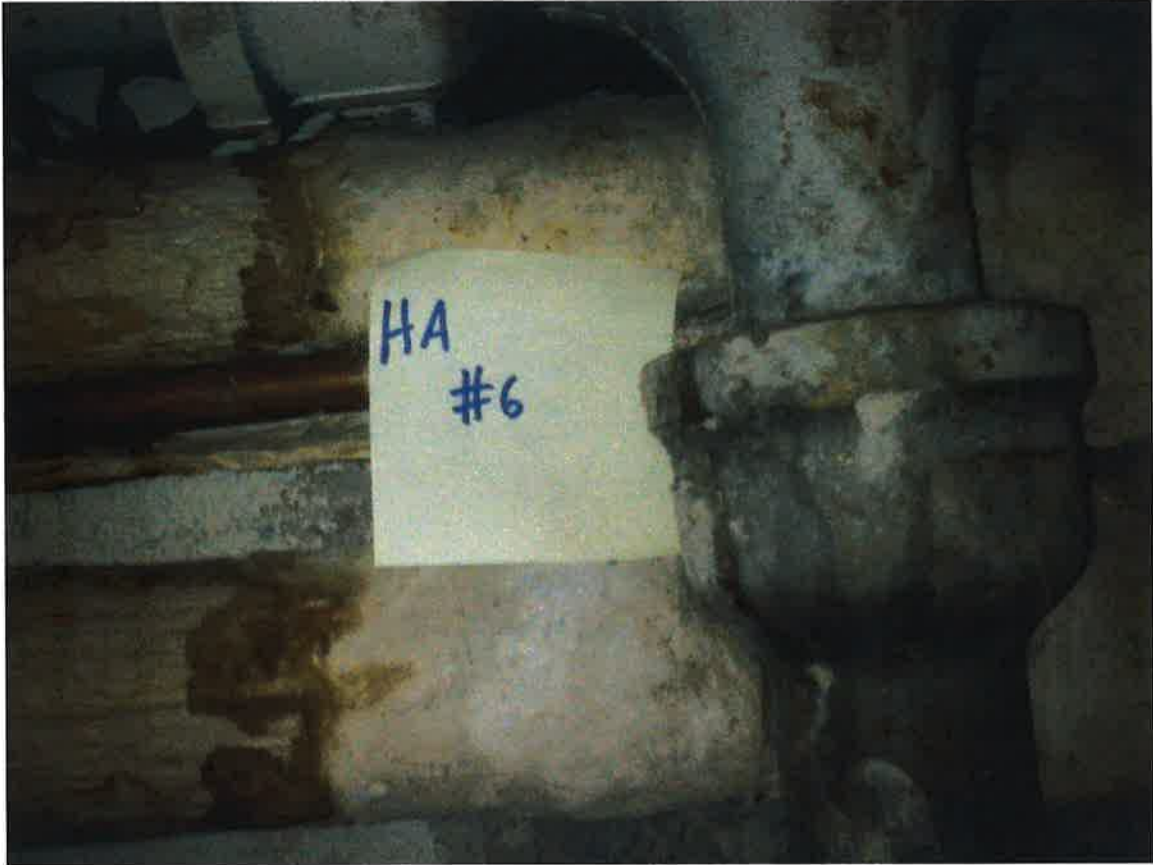
HA #3 – Non asbestos-containing 3" black cove molding
and associated mastic



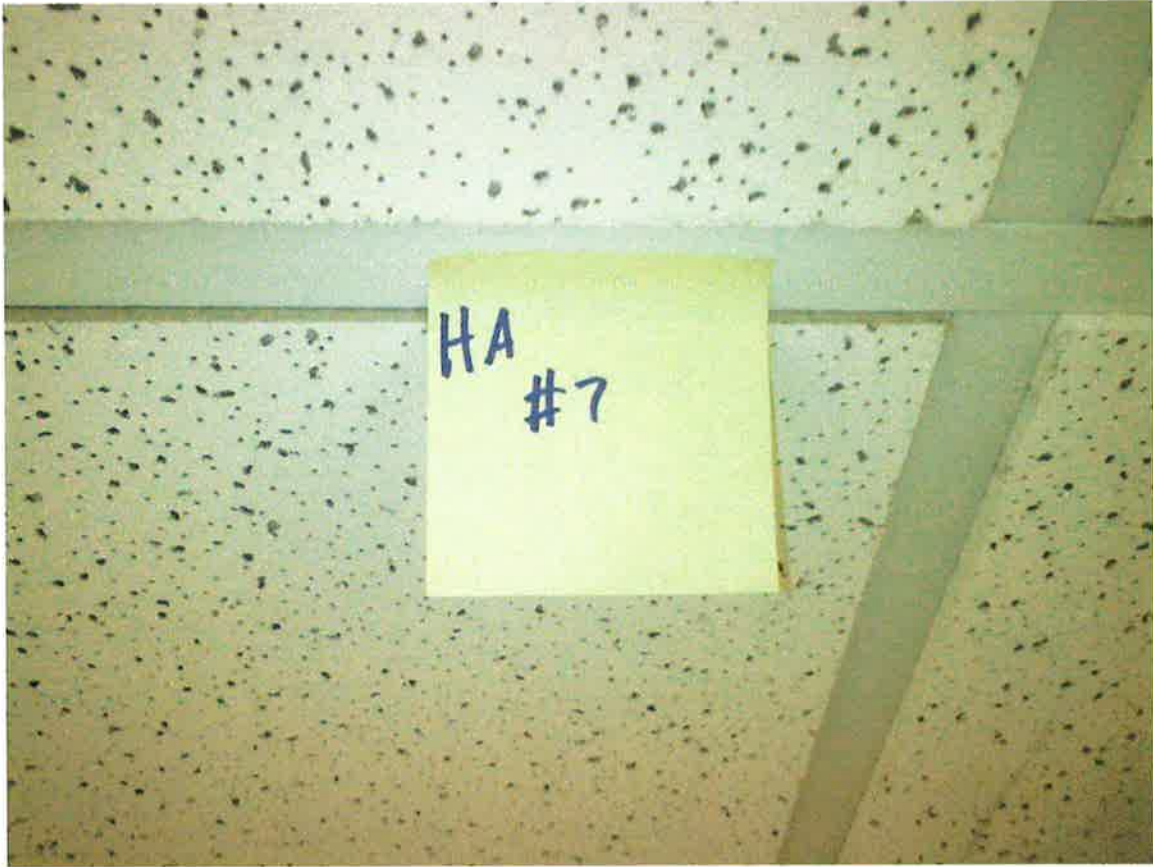
HA #4 – Non asbestos-containing 4" brown cove molding
and associated mastic



HA #5 – Non asbestos-containing domestic water pipe straight insulation
(wrap on fiberglass line)



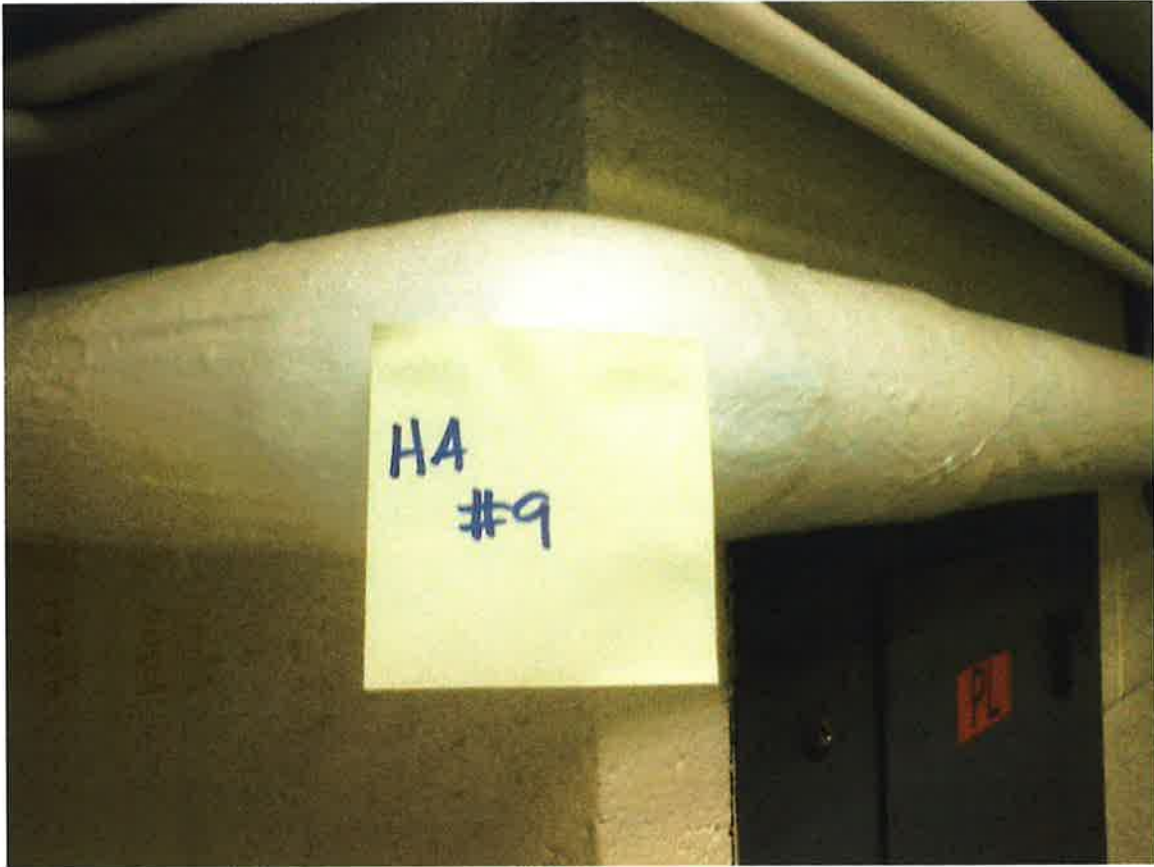
HA #6 – Non asbestos-containing domestic water pipe joint insulation



HA #7 – Non asbestos-containing 2' x 2' white drop-in ceiling tile
with holes and pin holes



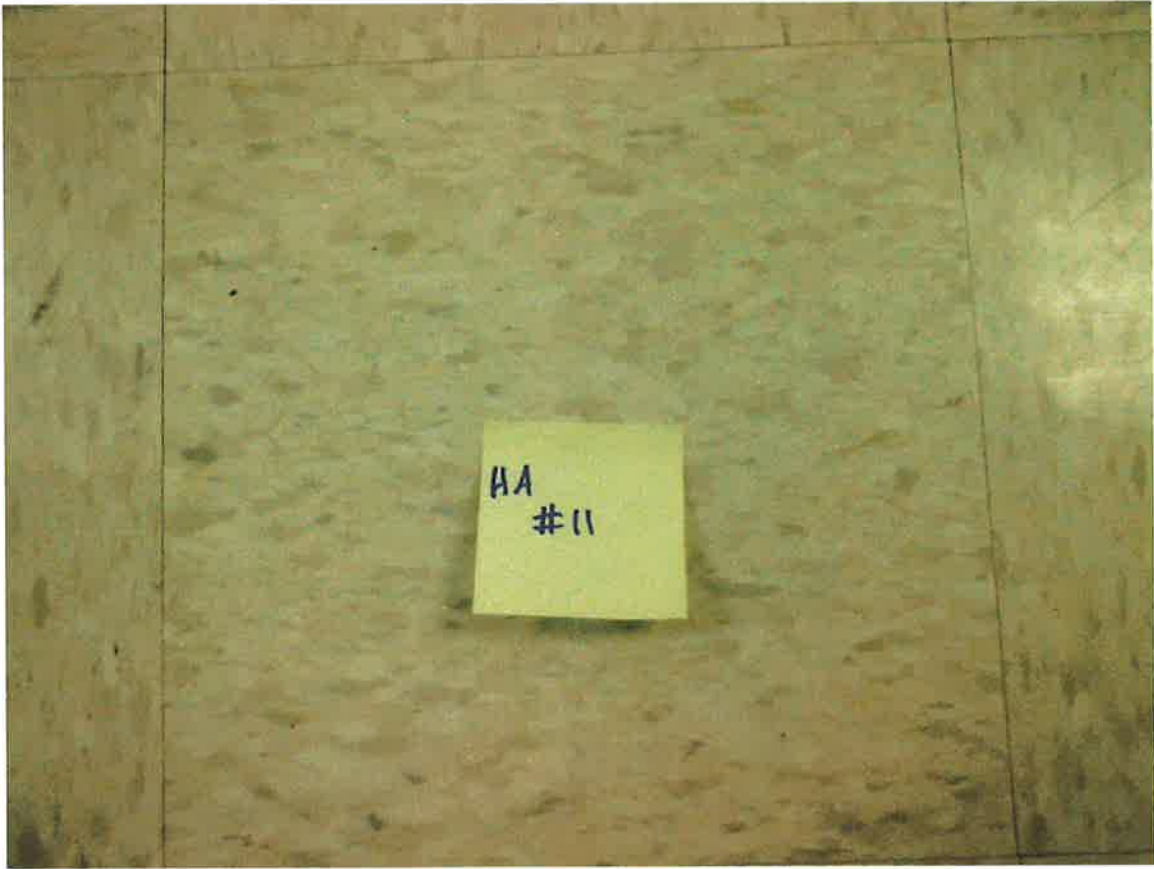
HA #8 – Non asbestos-containing steam and condensate pipe straight insulation (wrap on fiberglass line)



HA #9 – Non asbestos-containing steam and condensate pipe straight insulation (wrap on fiberglass line)



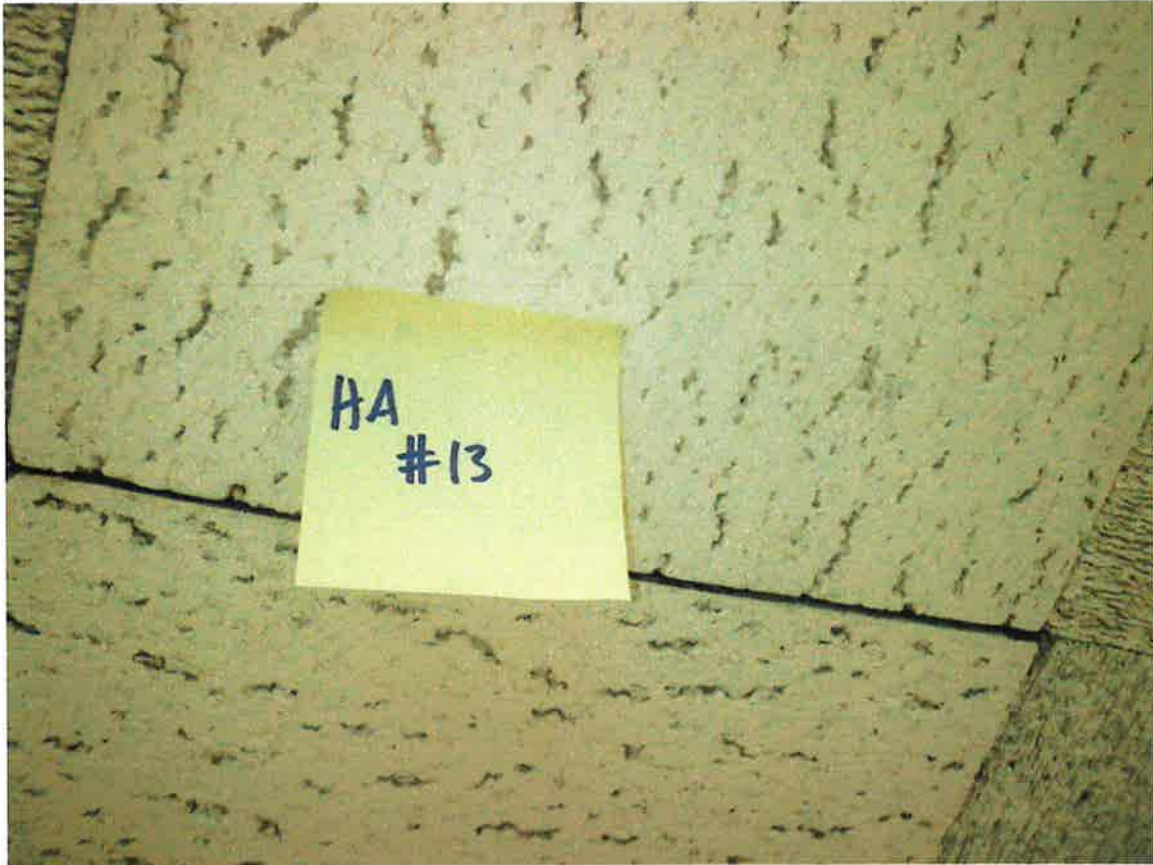
HA #10 – Non asbestos-containing red firestop caulk



HA #11 – Non asbestos-containing 12" x 12" tan floor tile
with marble pattern and associated mastic



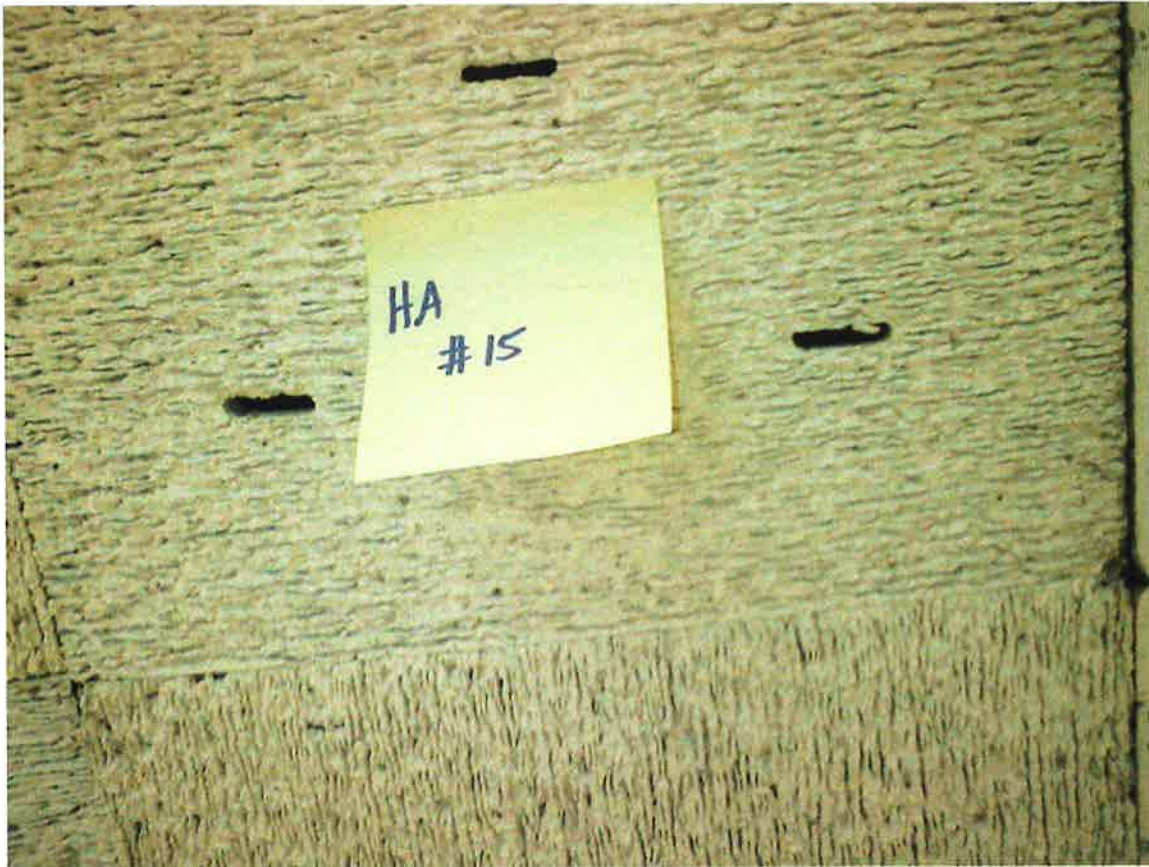
HA #12 – Non asbestos-containing brown glue pods



HA #13 – Non asbestos-containing 1' x 1' white spline ceiling tile
with fissures



HA #14 – Non asbestos-containing 1' x 1' white spline ceiling tile with lines



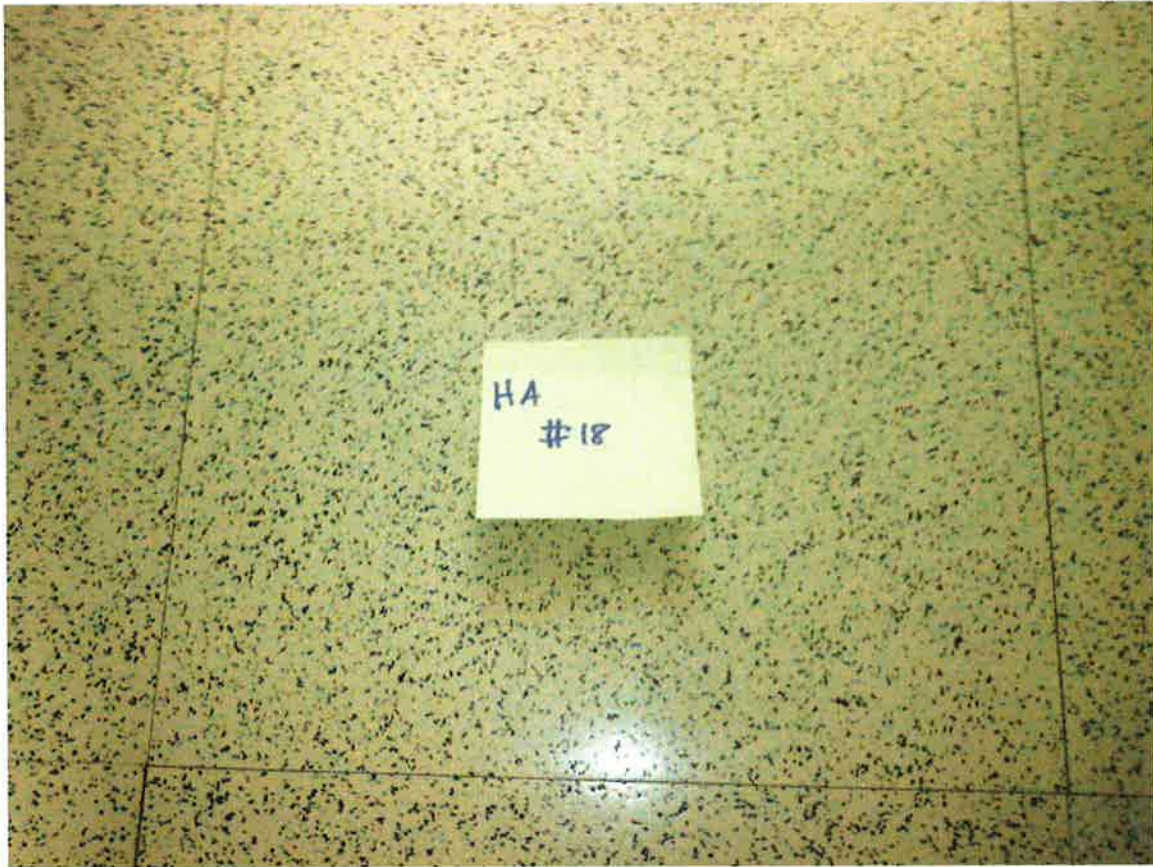
HA #15 – Non asbestos-containing 1' x 1' white spline ceiling tile
with lines and five holes



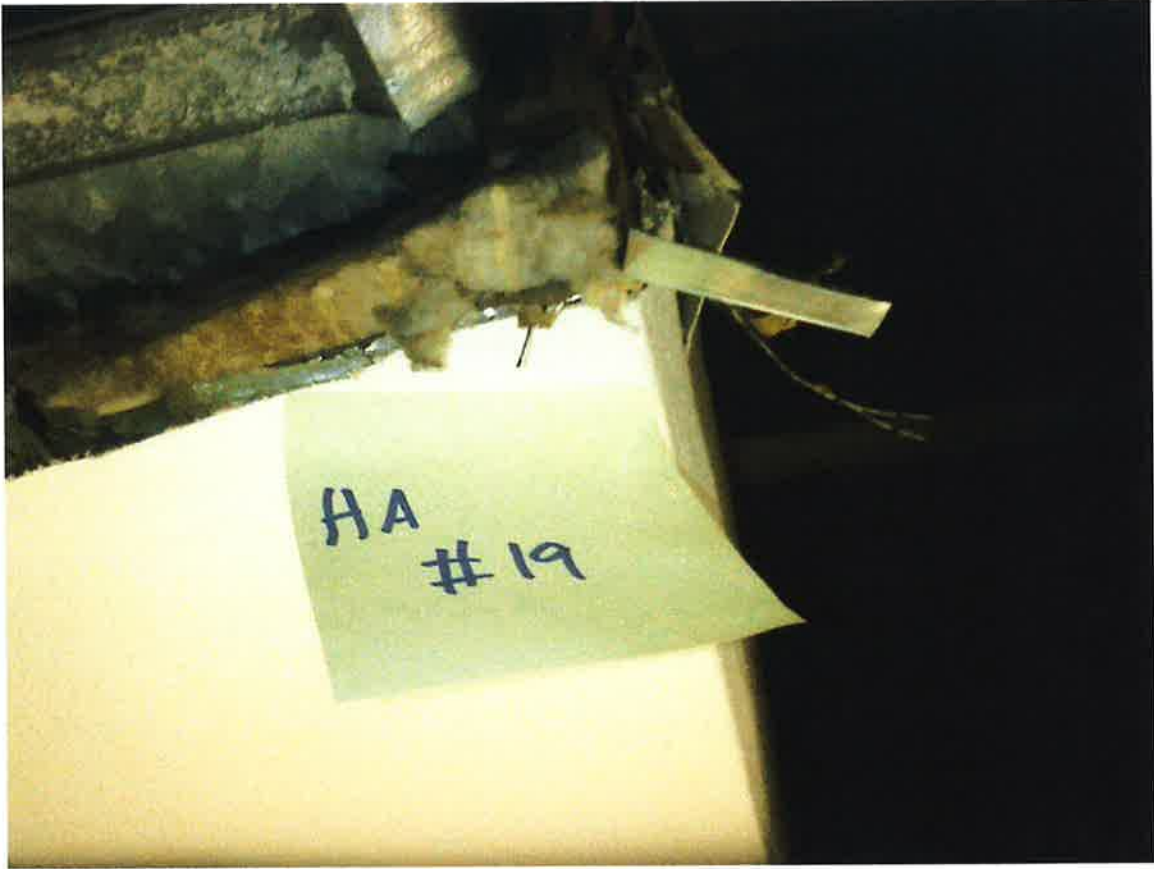
HA #16 – Non asbestos-containing interior silver window caulk compound



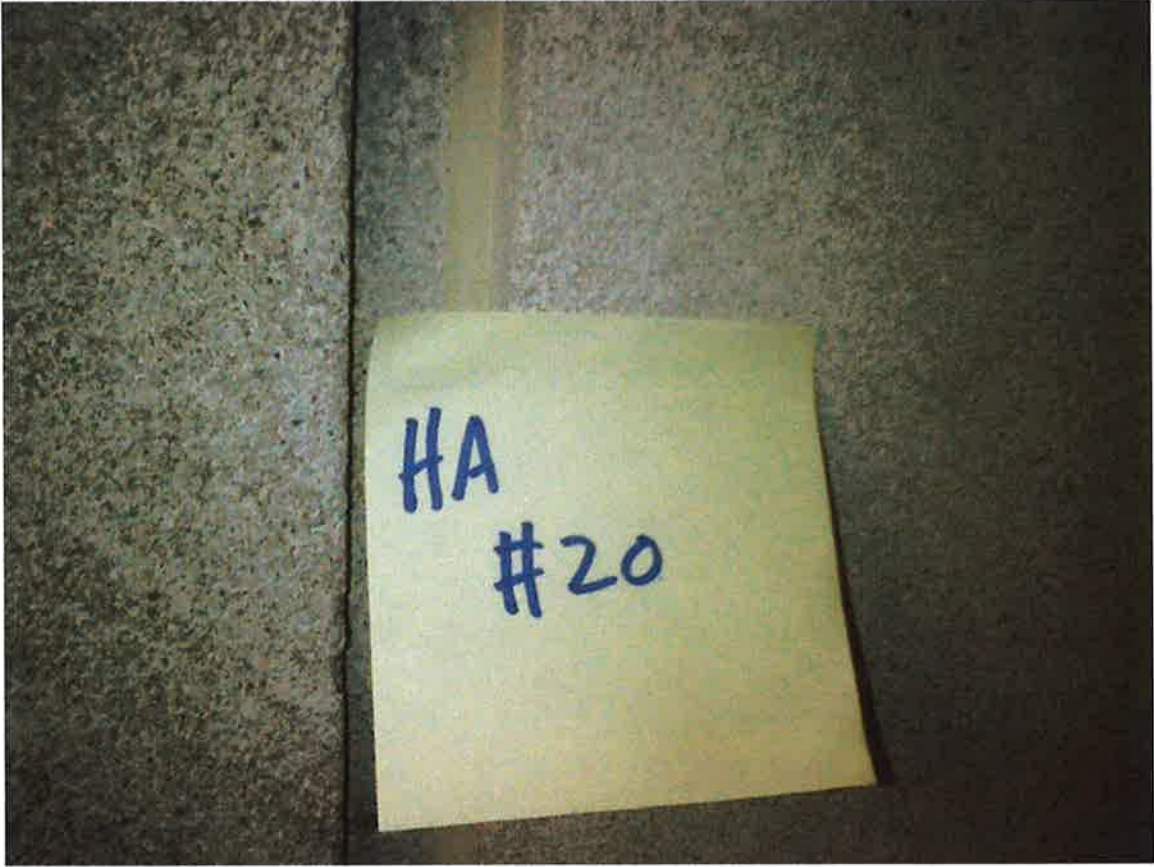
HA #17 – Assumed asbestos-containing black chalkboard



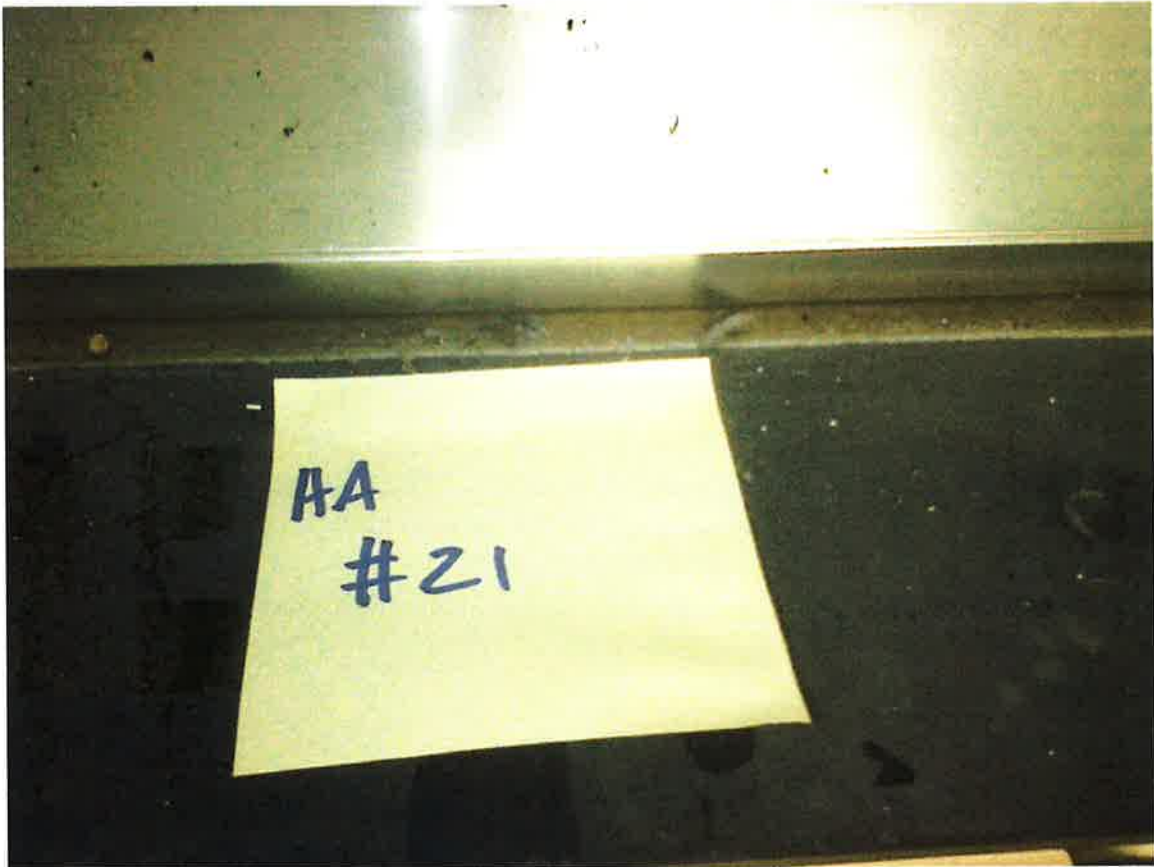
HA #18 – Non asbestos-containing 12" x 12" cream floor tile with black specks and associated mastic (multiple layers)



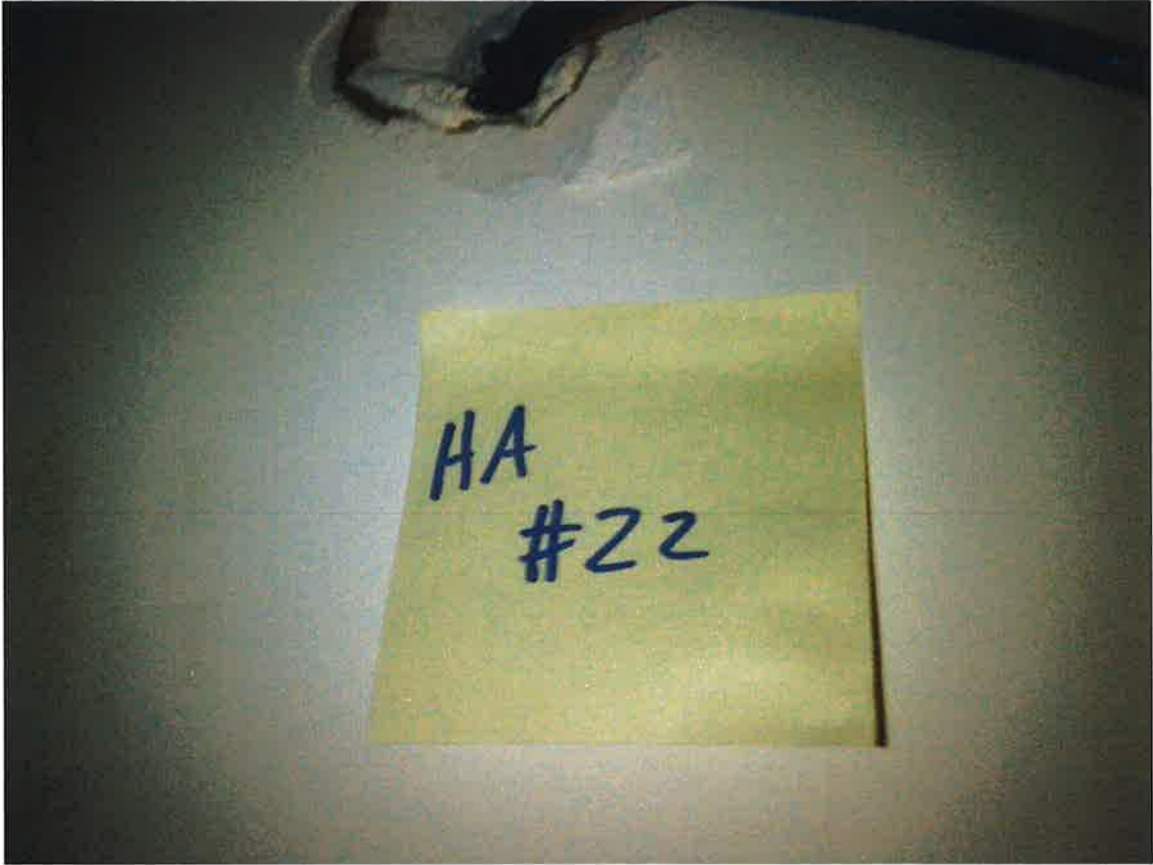
HA #19 – Asbestos-containing white duct wrap



HA #20 – Non asbestos-containing interior cream building caulk compound



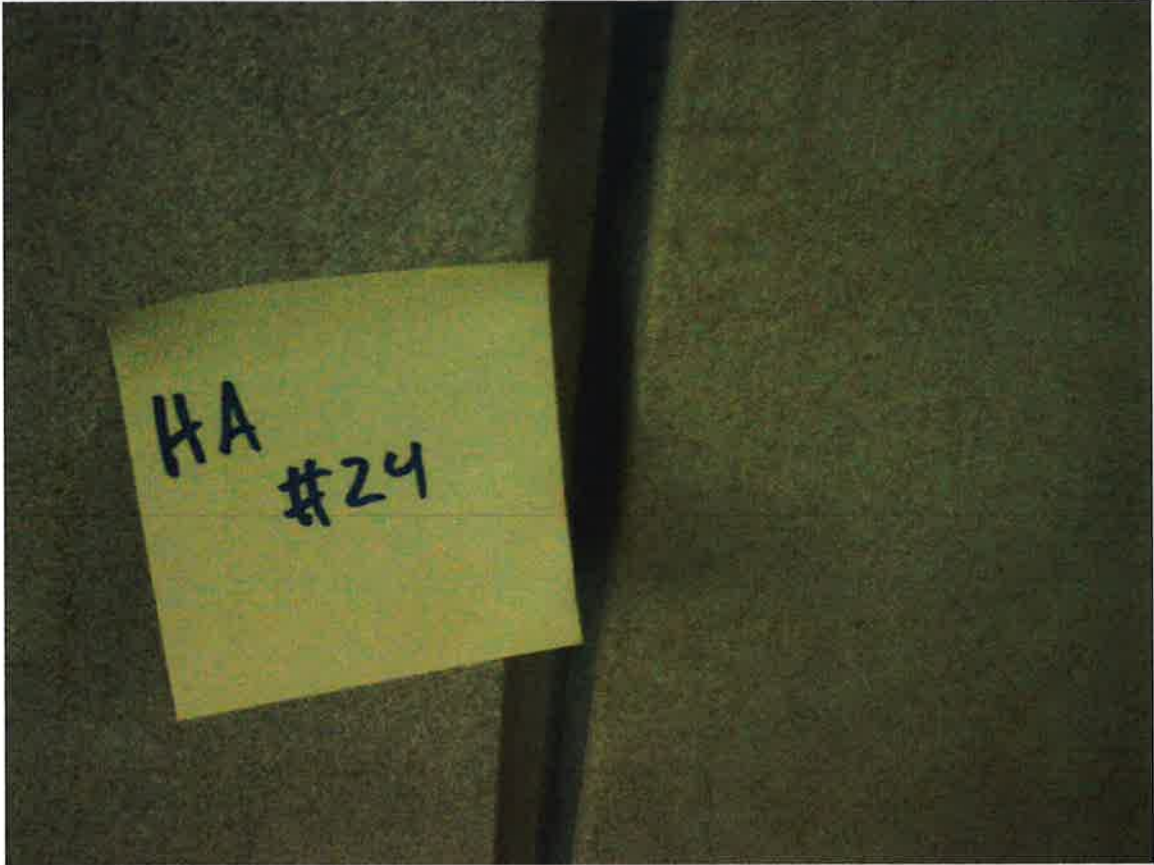
HA #21 – Non asbestos-containing interior gray window caulk compound



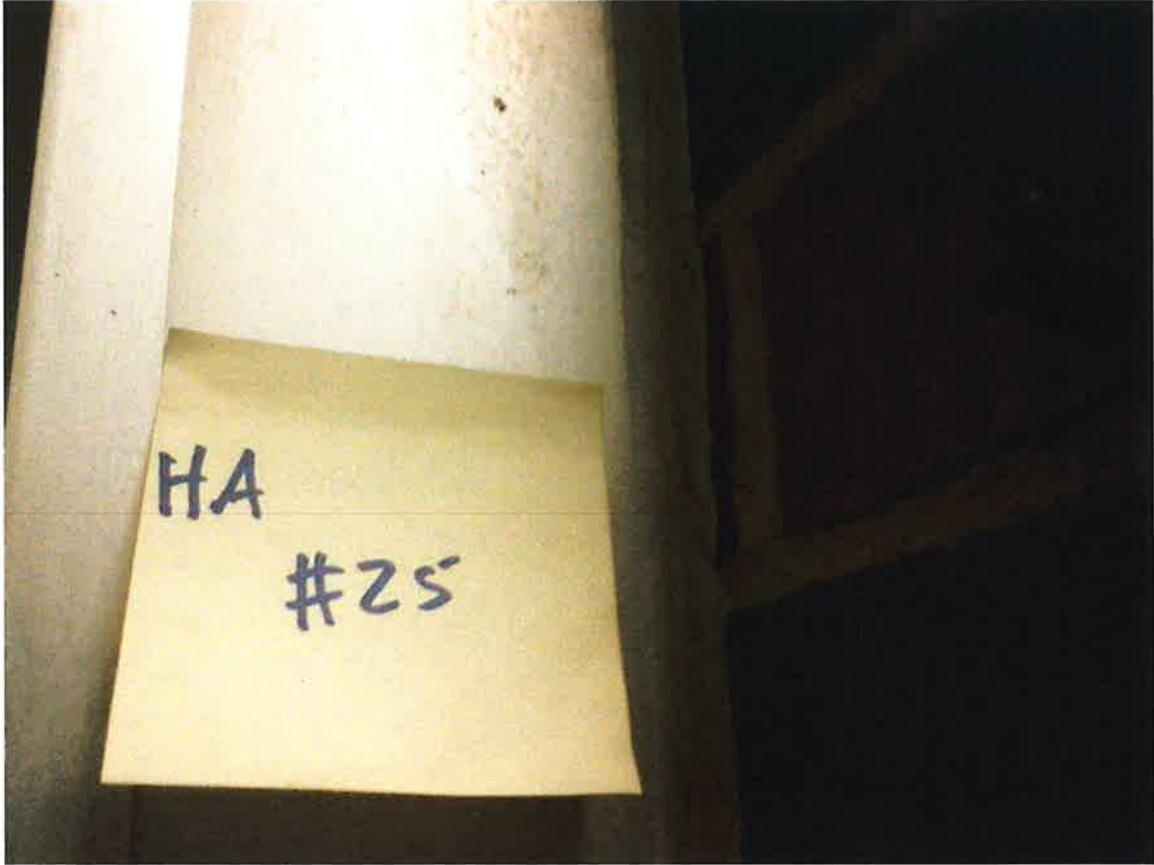
HA #22 – Non asbestos-containing white skimcoat over drywall



HA #23 – Non asbestos-containing fire-rated drywall



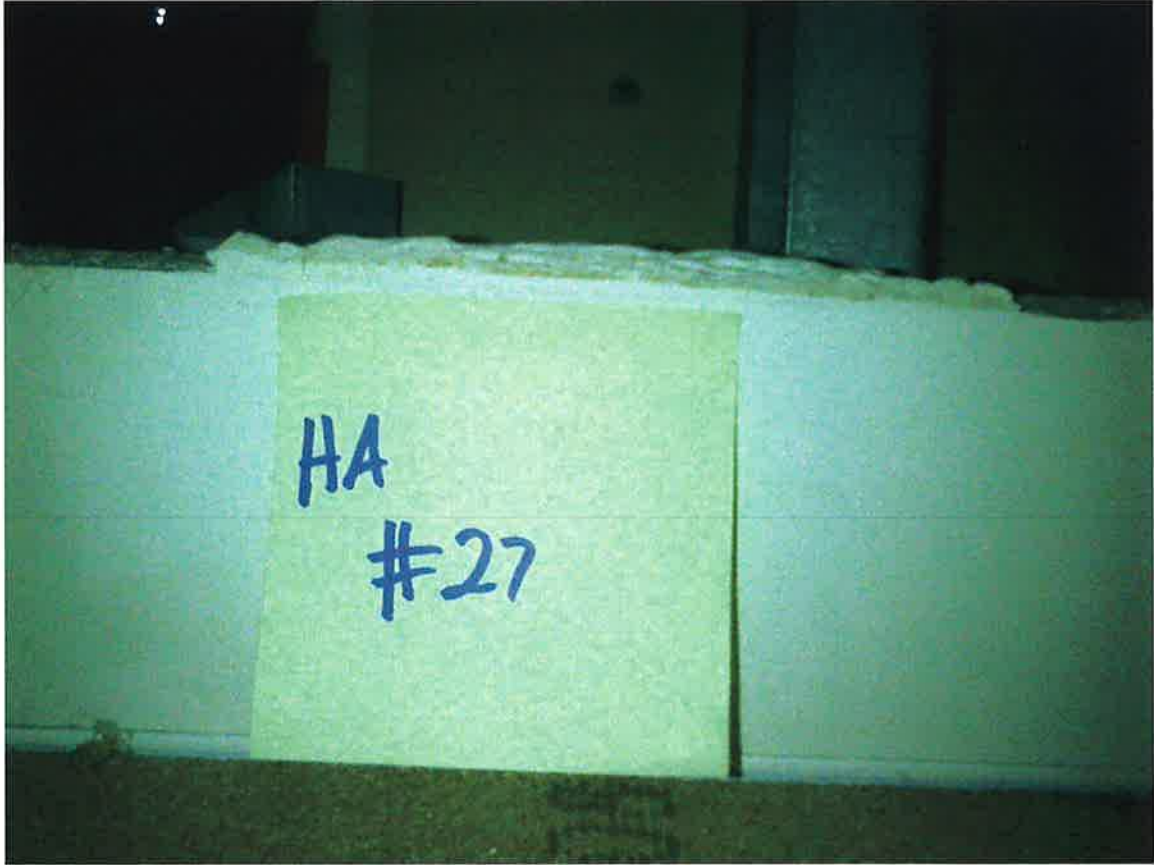
HA #24 – Non asbestos-containing interior (formerly exterior)
building caulk compound



HA #25 – Asbestos-containing interior (formerly exterior)
window caulk compound



HA #26 – Non asbestos-containing drywall



HA #27 – Non asbestos-containing drywall joint compound

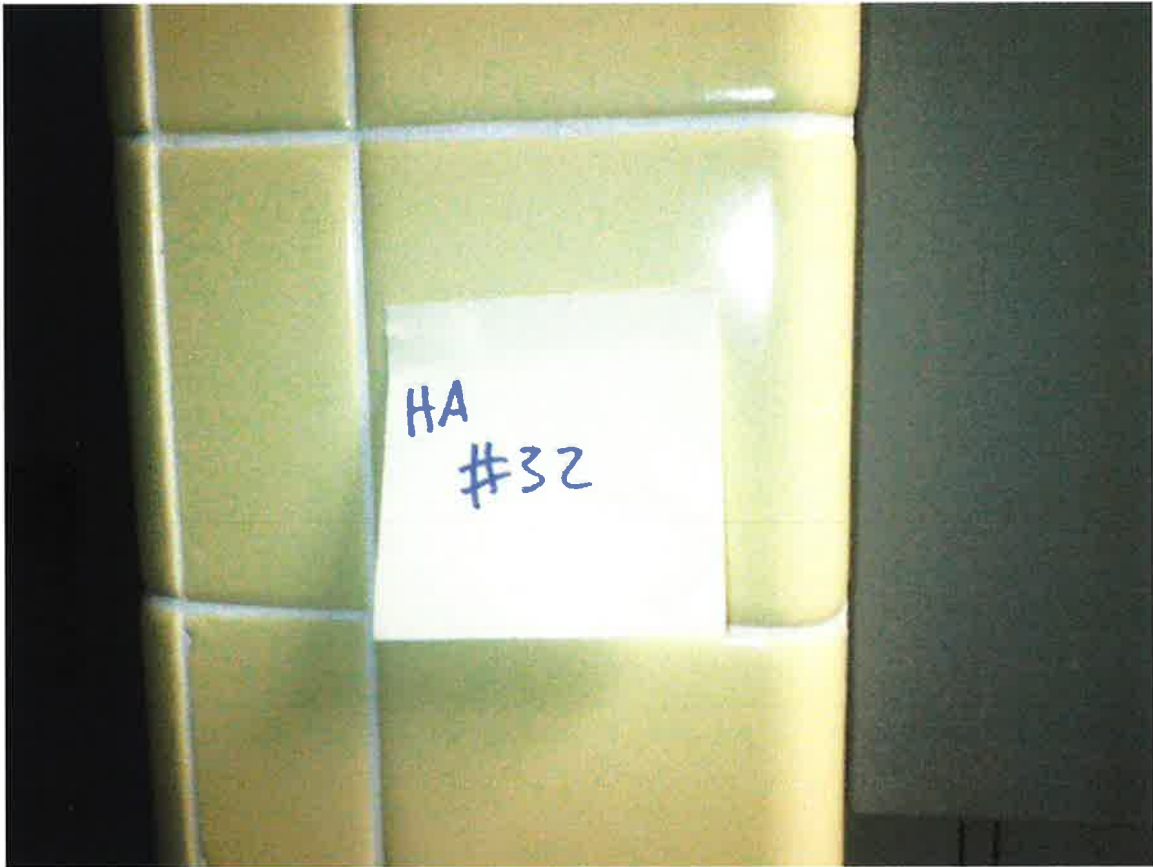


HA #30 – Non asbestos-containing 1/2" x 1/2" solid gray ceramic floor tile
bedding compound and grout



HA #31 – Non asbestos-containing 3" x 5" gray ceramic wall tile
bedding compound and grout

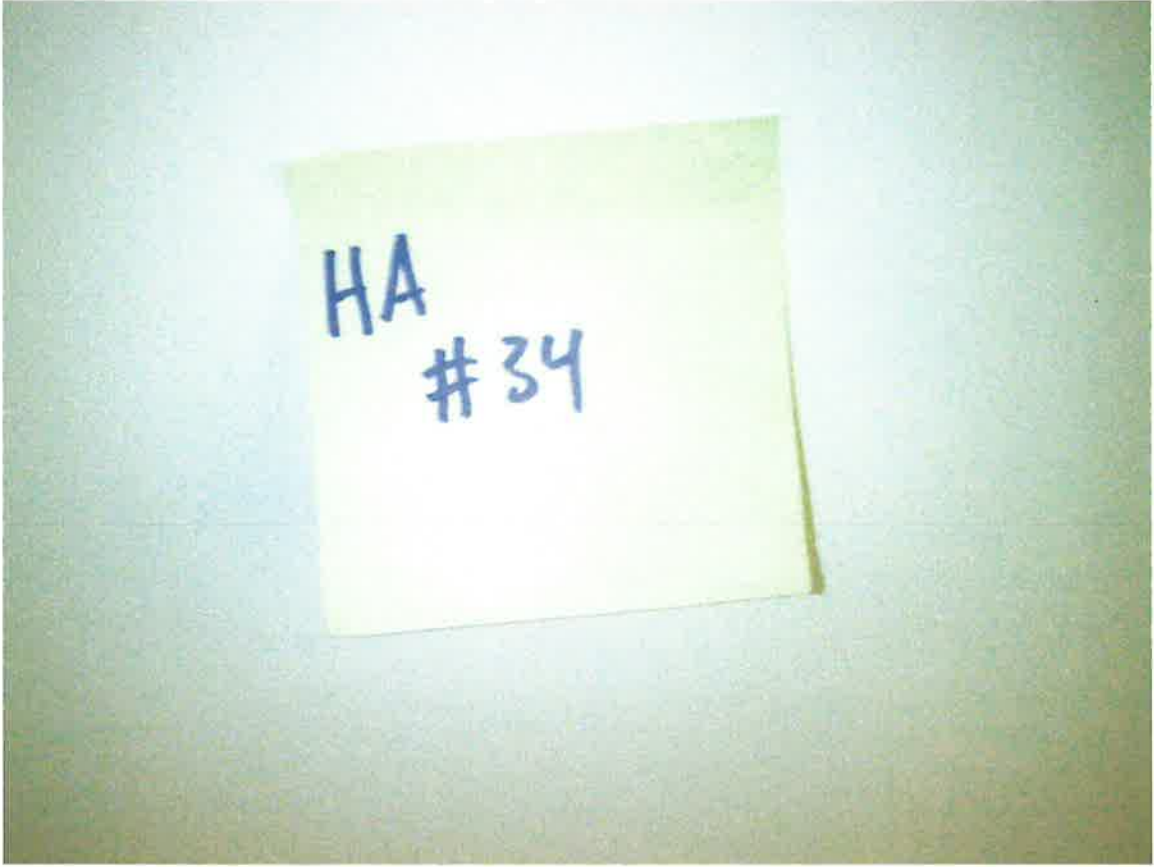
Note: Bedding and grout contained <1% asbestos
and should be treated as ACM



HA #32 – Asbestos-containing 4" x 4" yellow ceramic wall tile
bedding compound and grout



HA #33 – Asbestos-containing light reflector paper



HA #34 – Non asbestos-containing smooth ceiling plaster



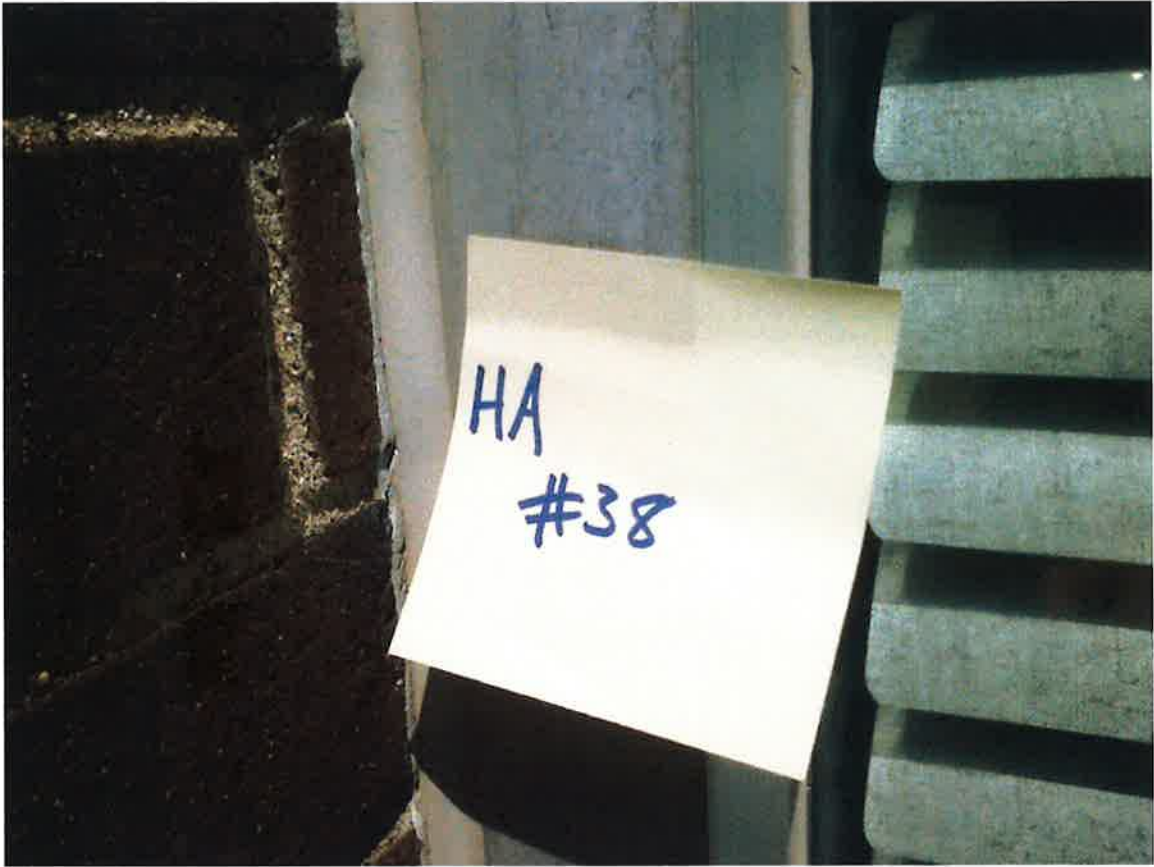
HA #35 – Non asbestos-containing 1/2" x 1/2" gray ceramic floor tile
with black specks bedding compound and grout



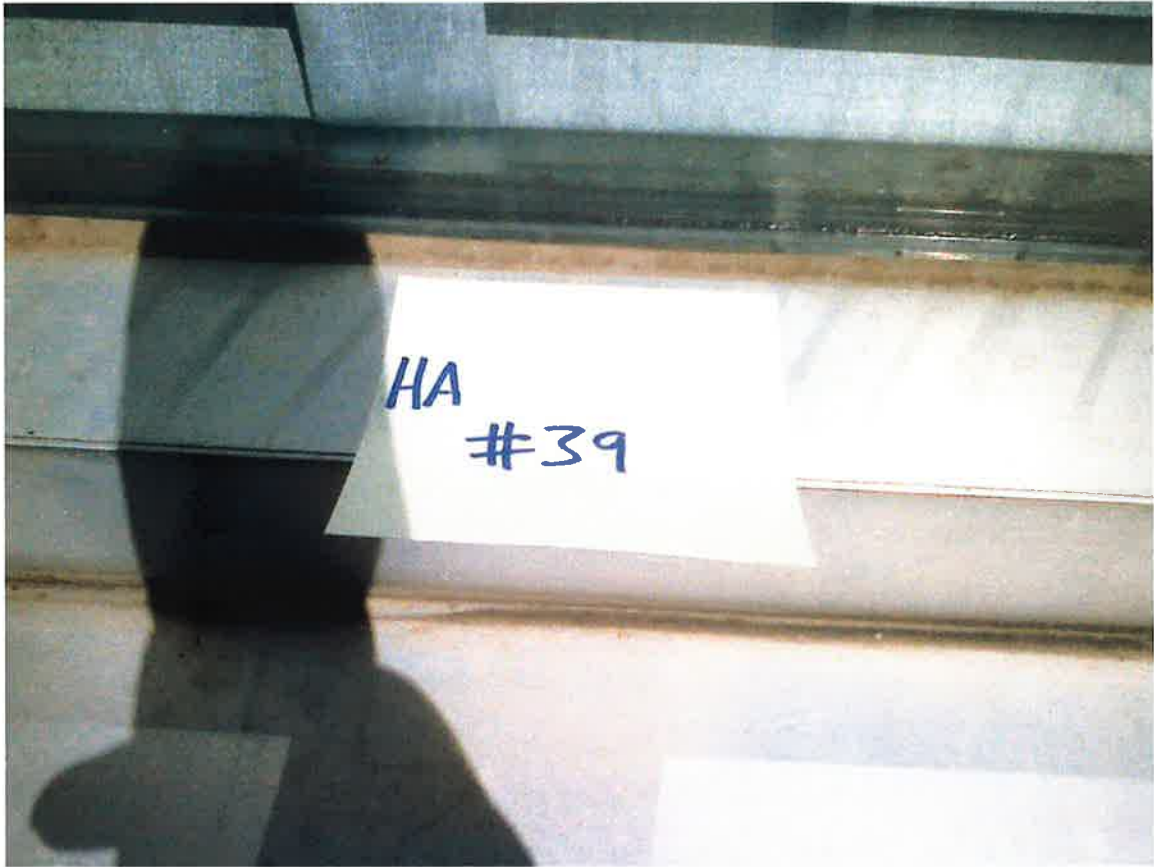
HA #36 – Non asbestos-containing exterior brown window,
door and building caulk compound



HA #37 – Non asbestos-containing exterior textured plaster



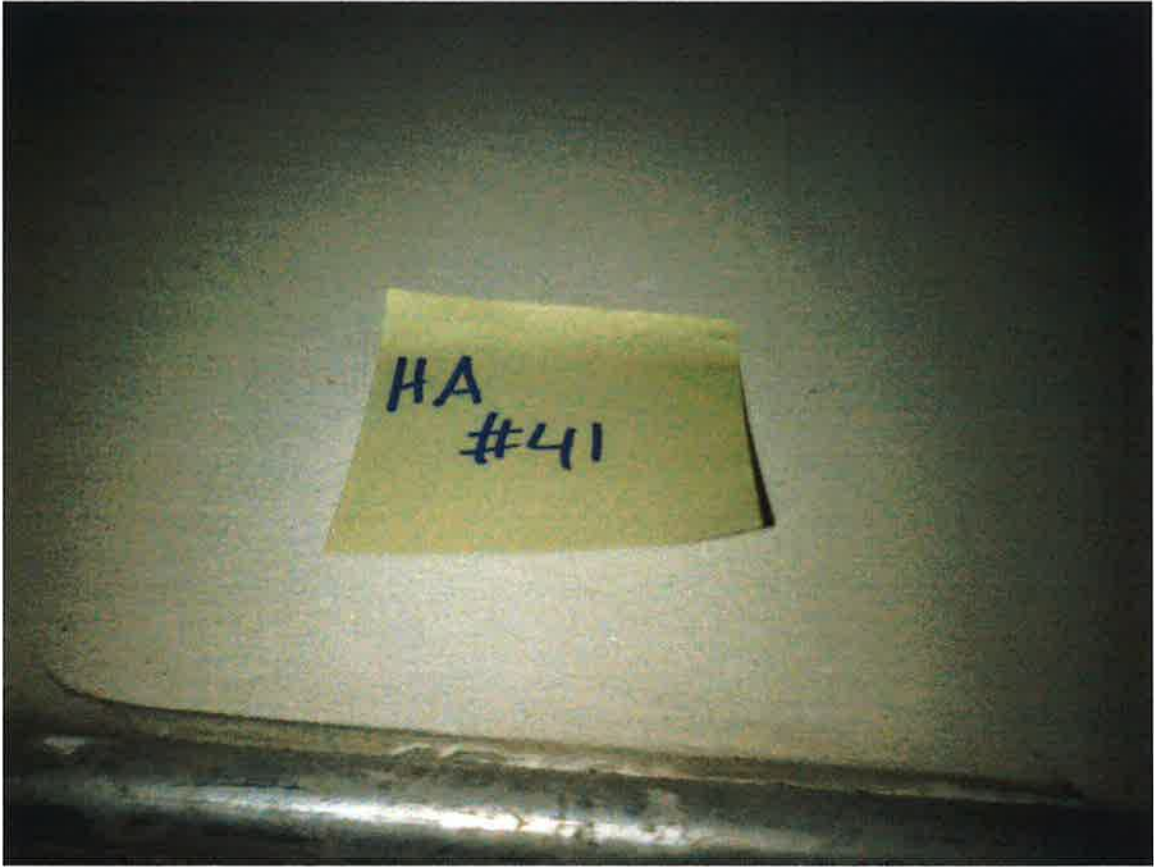
HA #38 – Non asbestos-containing exterior white window caulk compound



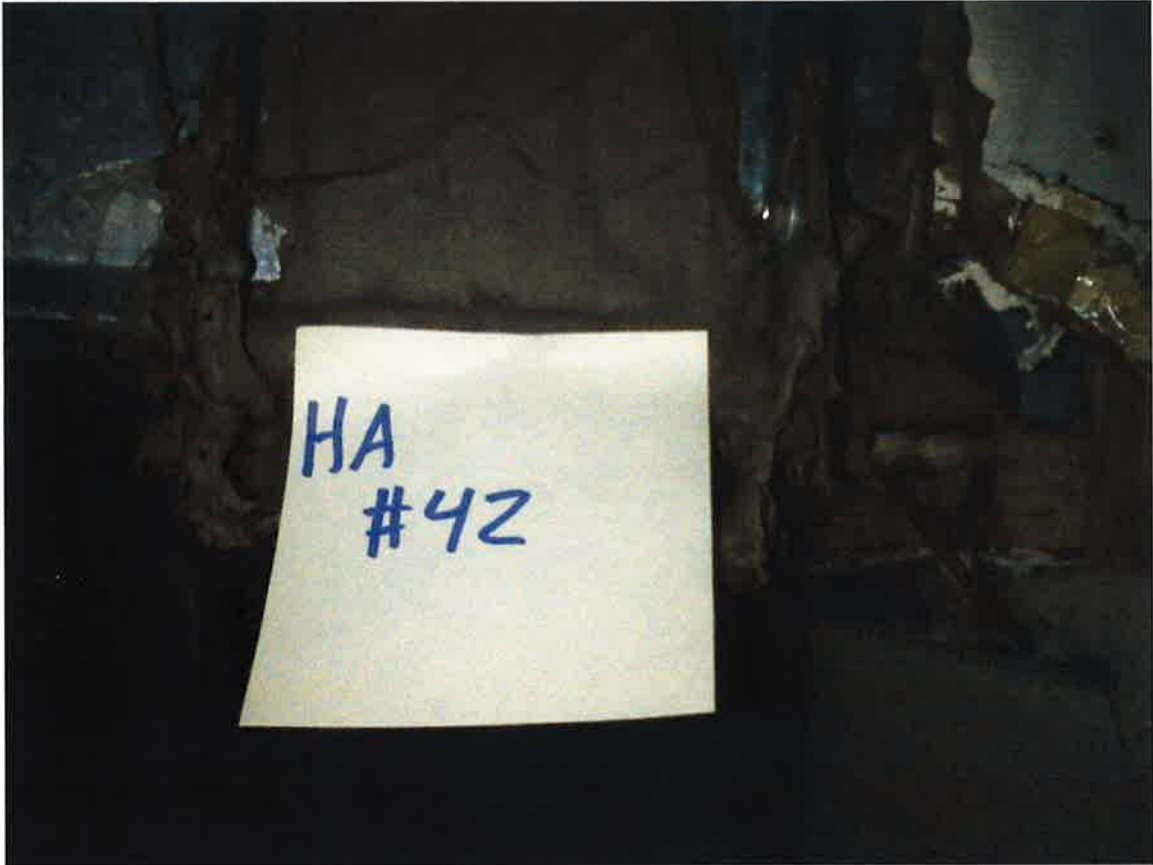
HA #39 – Non asbestos-containing exterior white
window glazing compound



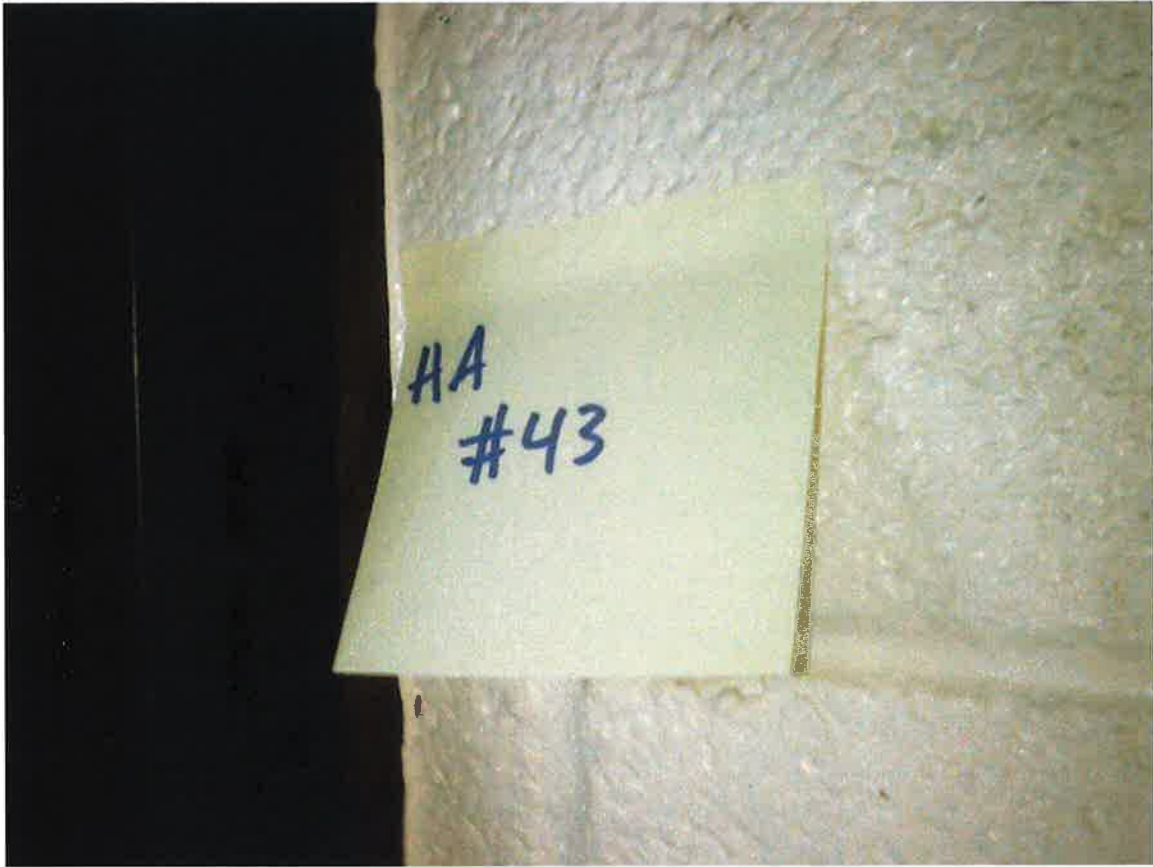
HA #40 – Non asbestos-containing exterior gray building caulk compound



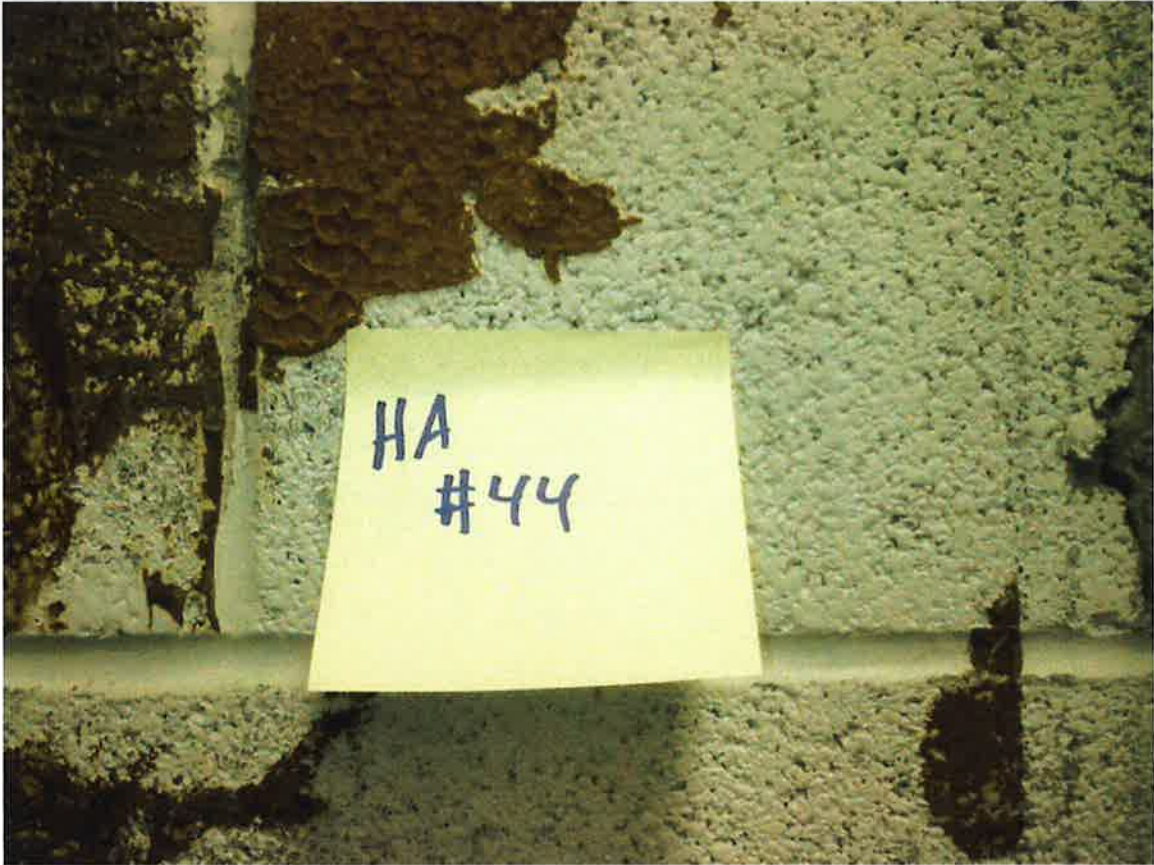
HA #41 – Non asbestos-containing textured firewall plaster



HA #42 – Non asbestos-containing indigo duct caulk (1964 area)



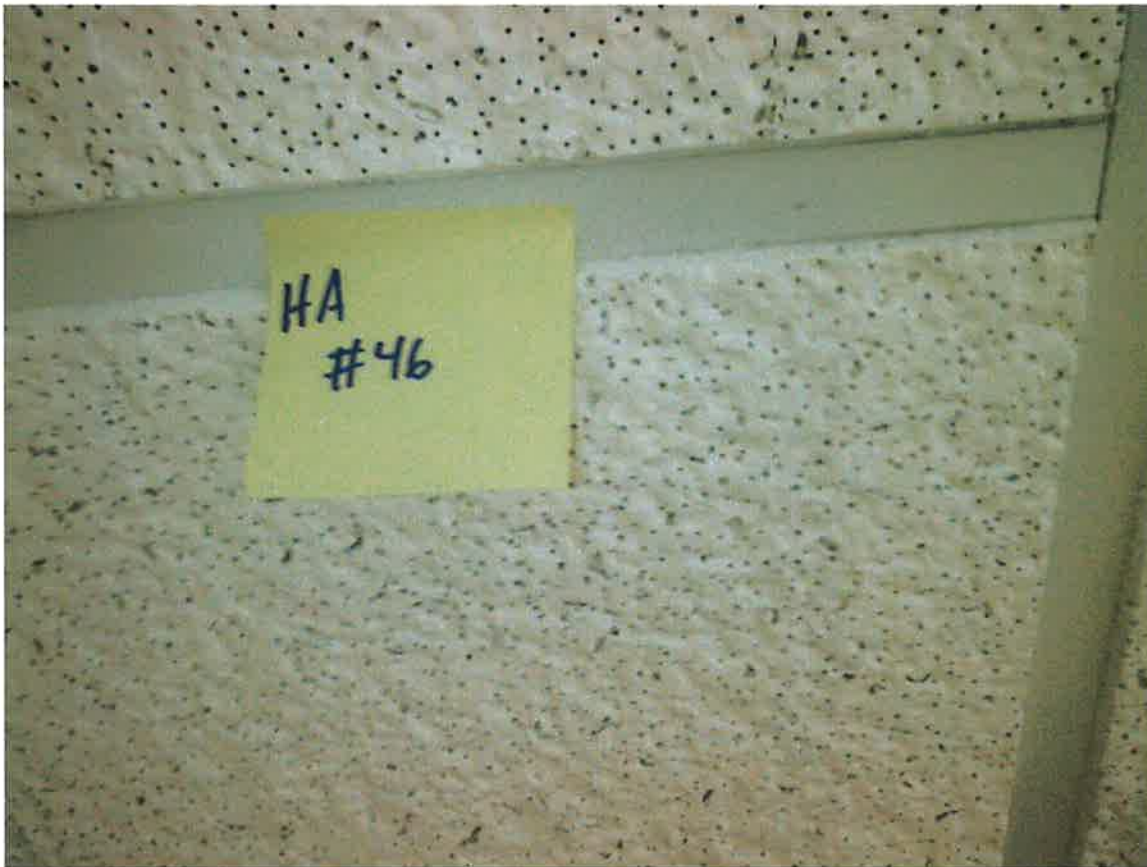
HA #43 – Non asbestos-containing brown door caulk compound (1964 area)



HA #44 – Non asbestos-containing yellow glue pods



HA #45 – Non asbestos-containing 12" x 12" light brown floor tile
with brown streaks and associated mastic



HA #46 – Non asbestos-containing 2' x 2' white drop-in ceiling tile with holes and texture