

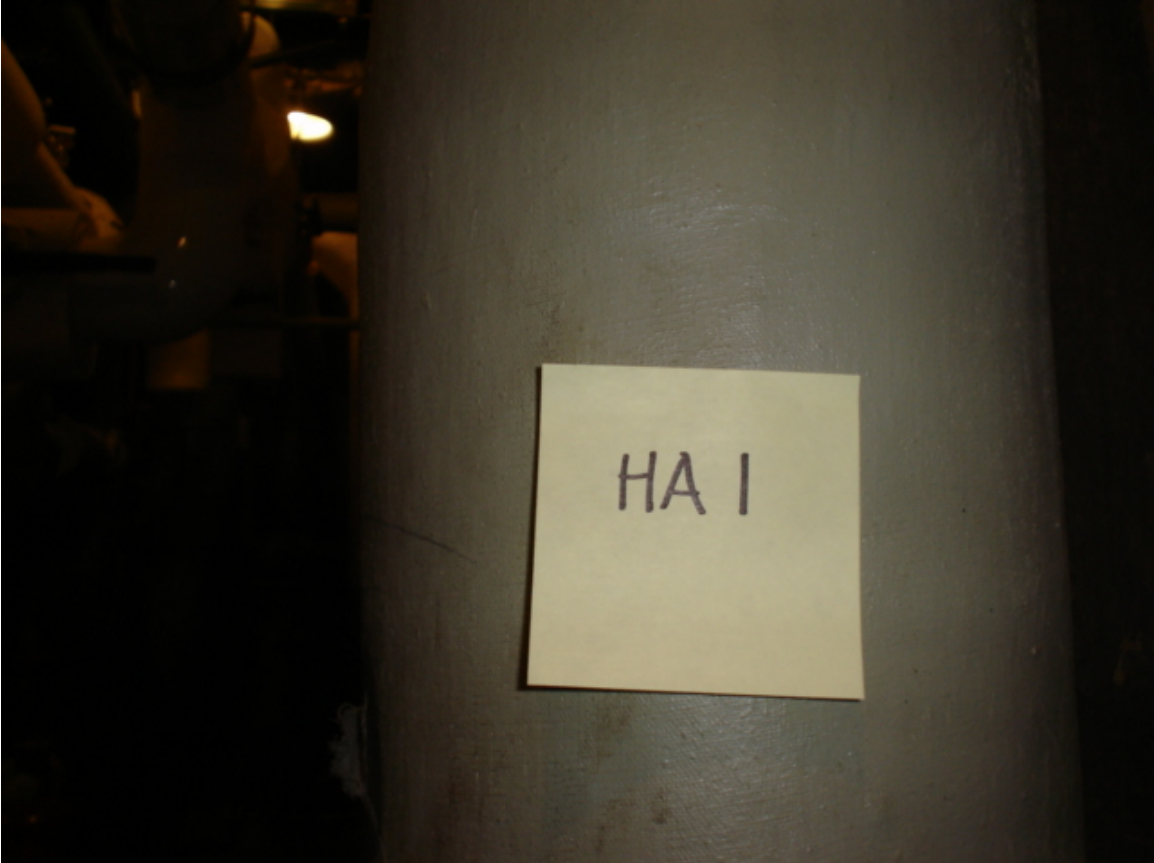
Student Services Photo Log



Exterior of Student Services Building

For more information contact MSU Environmental Health and Safety – (517) 353-8956

Student Services Photo Log



HA #1 – Asbestos-containing steam/condensate supply and return pipe straight insulation

For more information contact MSU Environmental Health and Safety – (517) 353-8956

Student Services Photo Log



HA #2 – Asbestos-containing steam/condensate supply and return pipe joint and hanger insulation

For more information contact MSU Environmental Health and Safety – (517) 353-8956

Student Services Photo Log



HA #3 – Non asbestos-containing tan vinyl stair tread and flooring with small squares and associated mastic

For more information contact MSU Environmental Health and Safety – (517) 353-8956

Student Services Photo Log



HA #4 – Non asbestos-containing 12" x 12" cream floor tile
with rust and white streaks and associated mastic

For more information contact MSU Environmental Health and Safety – (517) 353-8956

Student Services Photo Log



HA #5 – Non asbestos-containing 4" brown cove molding
and associated mastic

For more information contact MSU Environmental Health and Safety – (517) 353-8956

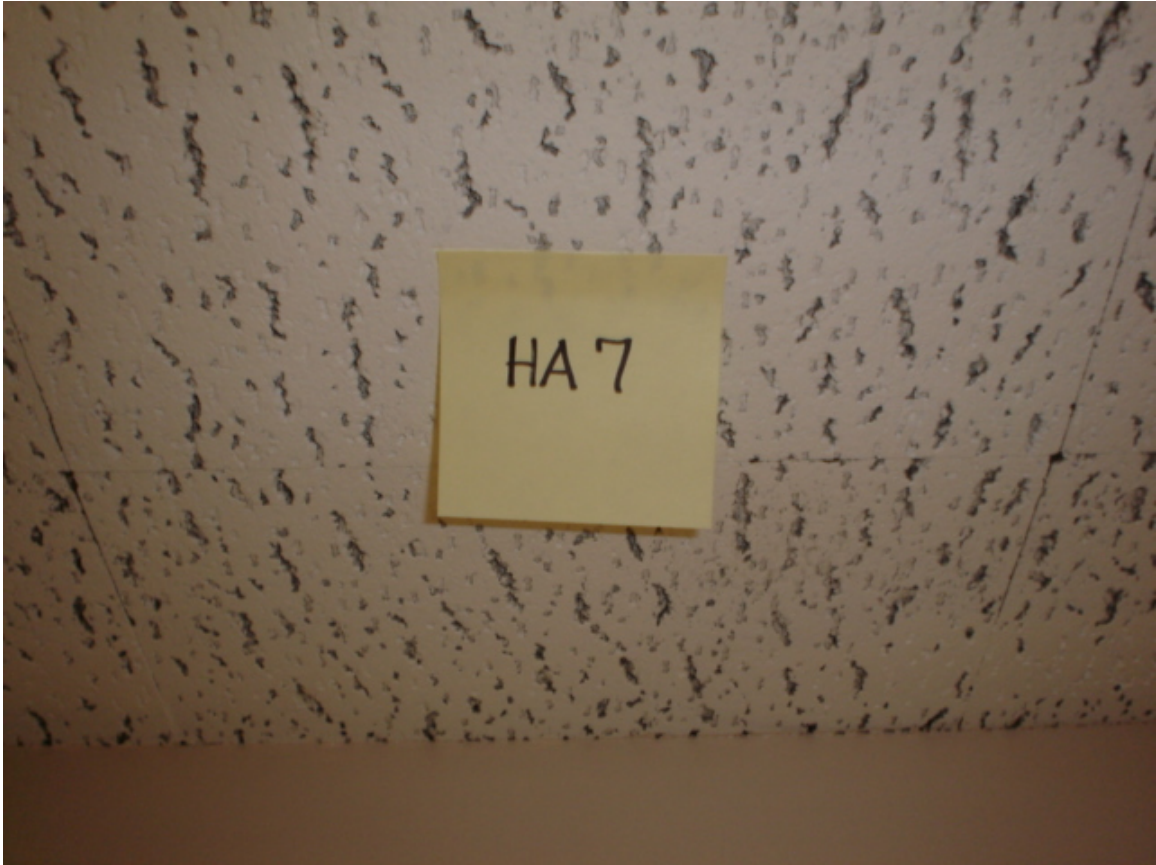
Student Services Photo Log



HA #6 – Non asbestos-containing plaster

For more information contact MSU Environmental Health and Safety – (517) 353-8956

Student Services Photo Log



HA #7 – Non asbestos-containing 12" x 12" white ceiling tile with pin holes and fissures and associated non asbestos-containing glue pods

For more information contact MSU Environmental Health and Safety – (517) 353-8956

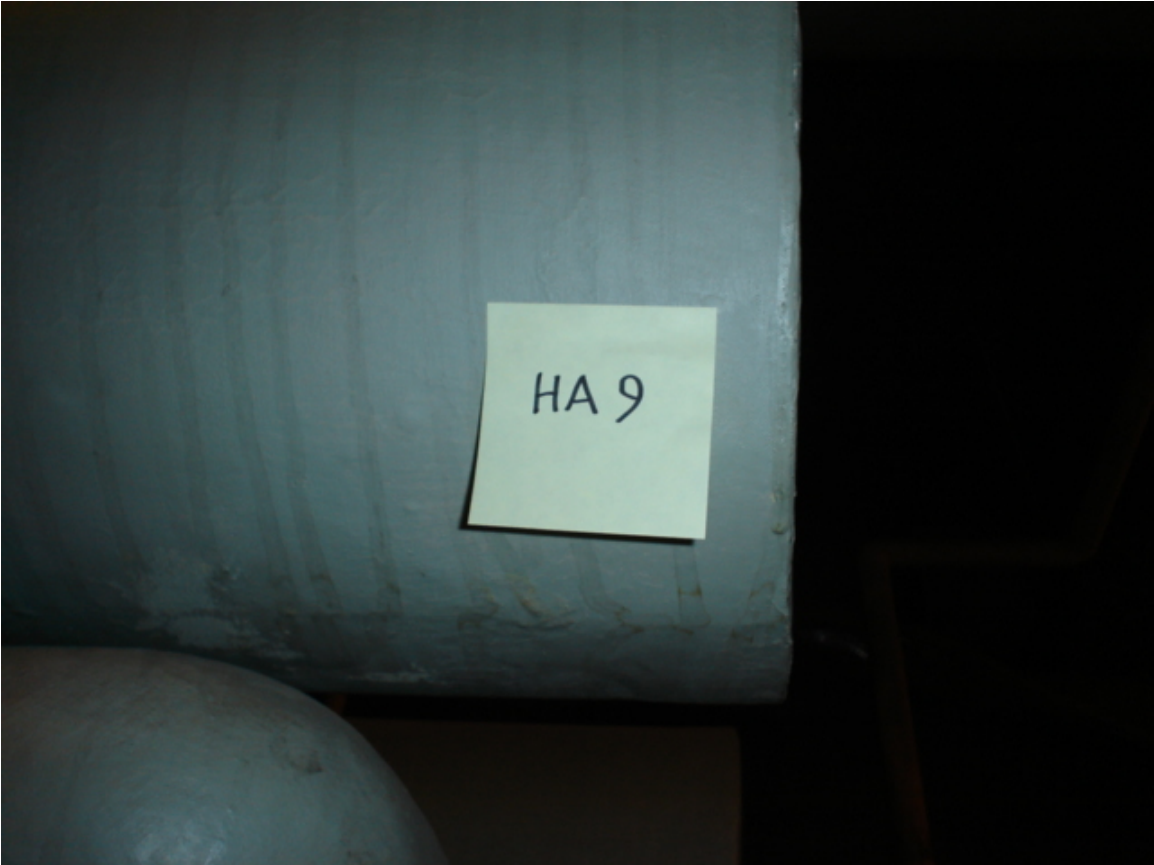
Student Services Photo Log



HA #8 – Non asbestos-containing 4" black cove molding
and associated mastic

For more information contact MSU Environmental Health and Safety – (517) 353-8956

Student Services Photo Log



HA #9 – Asbestos-containing expansion tank insulation

For more information contact MSU Environmental Health and Safety – (517) 353-8956

Student Services Photo Log

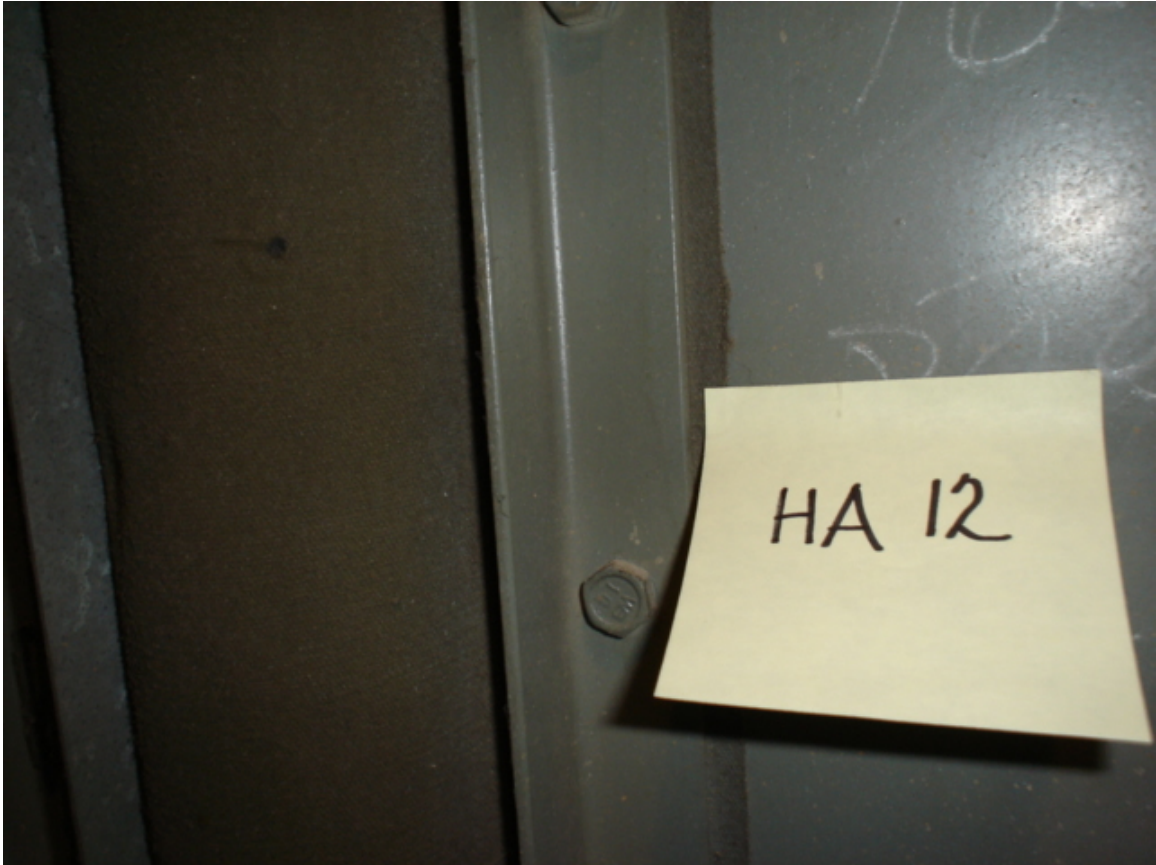


HA #10 – Asbestos-containing domestic water supply
pipe straight insulation

HA #11 – Asbestos-containing domestic water supply
pipe joint and hanger insulation

For more information contact MSU Environmental Health and Safety – (517) 353-8956

Student Services Photo Log



HA #12 – Non asbestos-containing expansion cloth ventilation duct

For more information contact MSU Environmental Health and Safety – (517) 353-8956

Student Services Photo Log



HA #13 – Assumed asbestos-containing fire door and frame

For more information contact MSU Environmental Health and Safety – (517) 353-8956

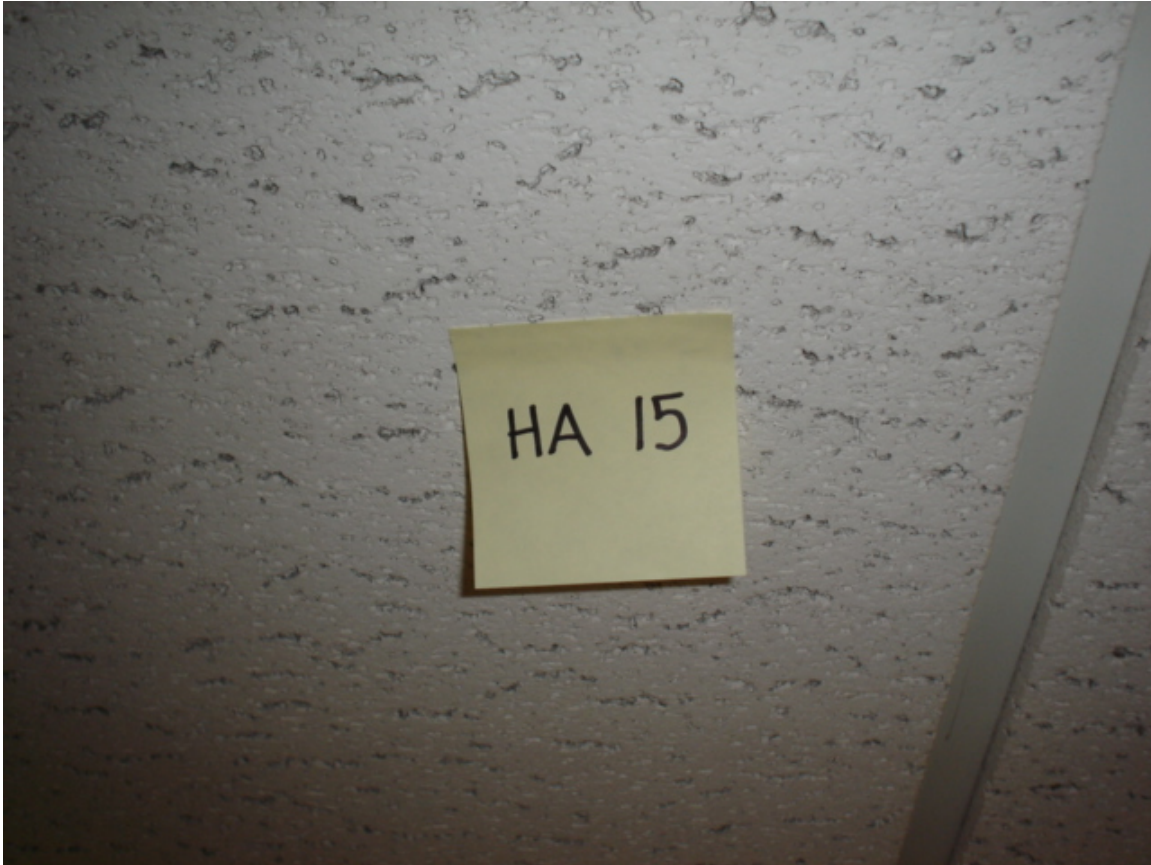
Student Services Photo Log



HA #14 – Non asbestos-containing 6" tan cove molding
and associated mastic

For more information contact MSU Environmental Health and Safety – (517) 353-8956

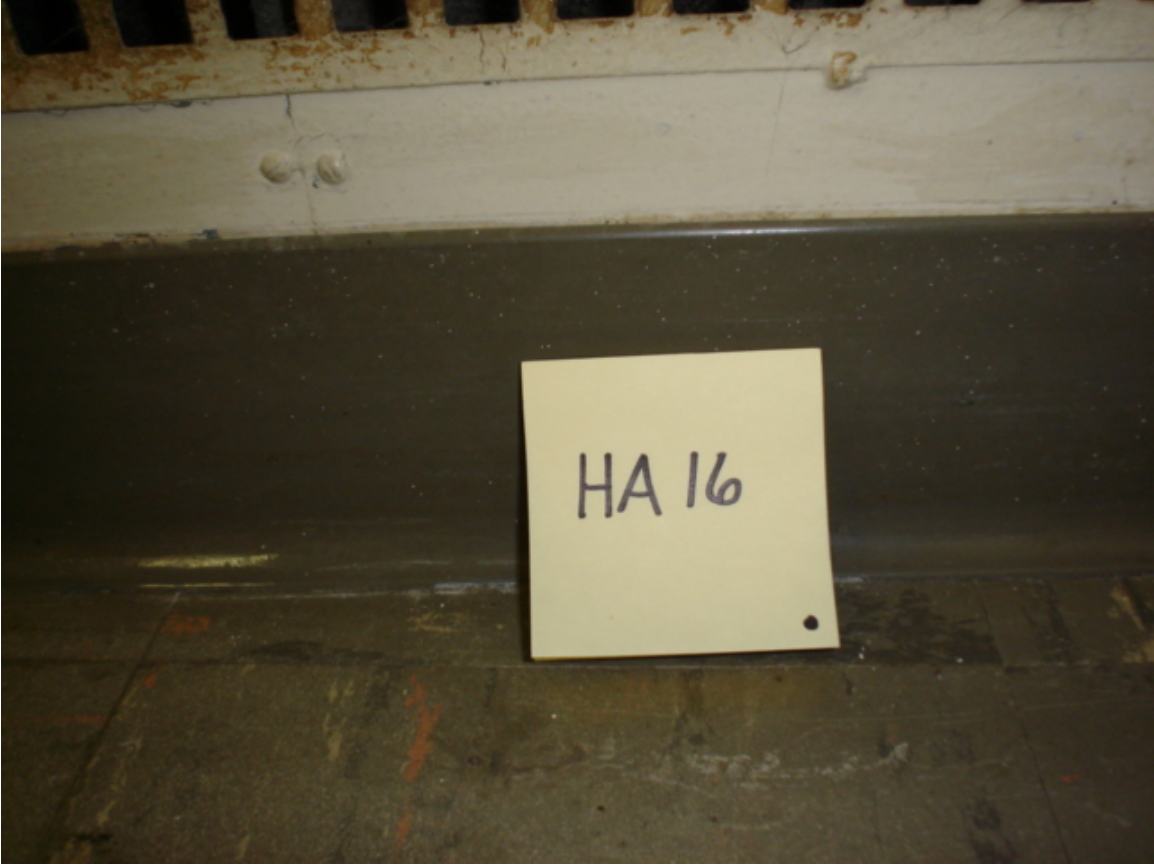
Student Services Photo Log



HA #15 – Non asbestos-containing 2' x 2' white drop-in ceiling tile
with pin holes and fissures

For more information contact MSU Environmental Health and Safety – (517) 353-8956

Student Services Photo Log



HA #16 – Non asbestos-containing 4" gray cove molding
and associated mastic

For more information contact MSU Environmental Health and Safety – (517) 353-8956

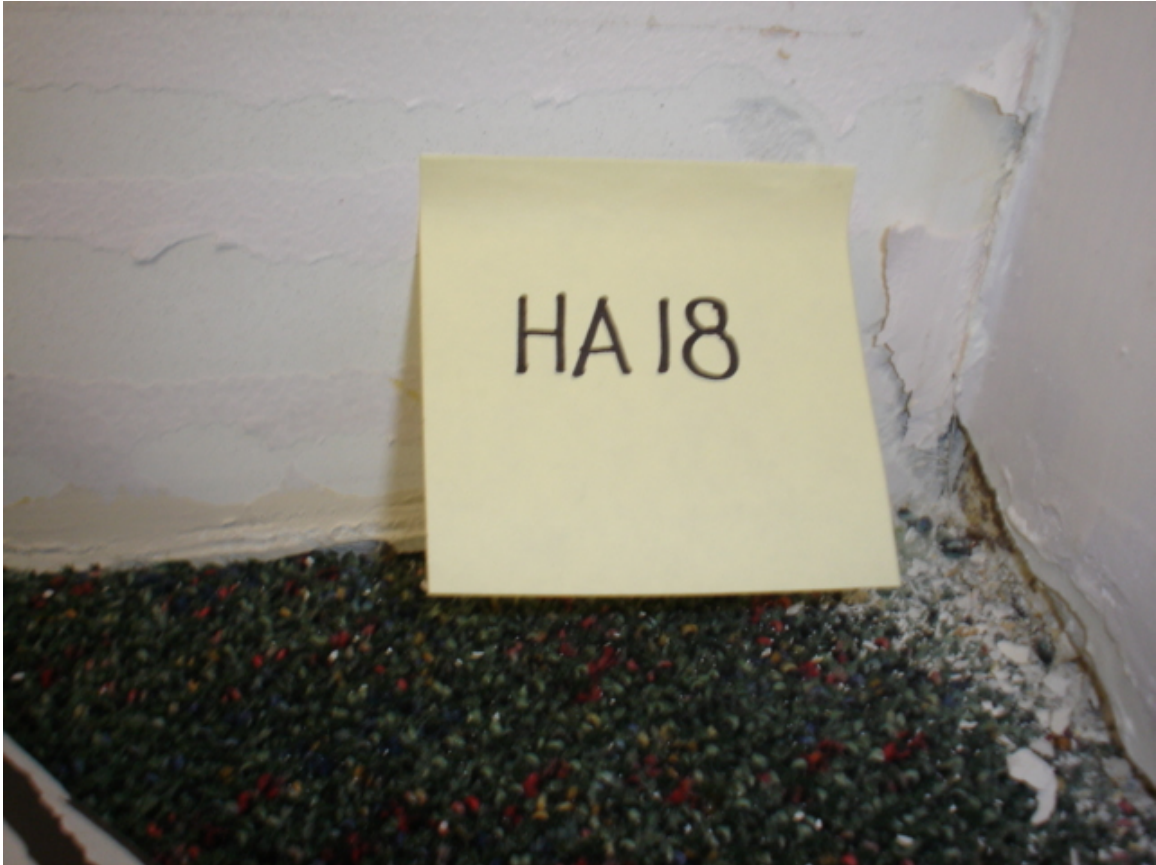
Student Services Photo Log



HA #17 – Non asbestos-containing drywall

For more information contact MSU Environmental Health and Safety – (517) 353-8956

Student Services Photo Log



HA #18 – Non asbestos-containing drywall joint compound

For more information contact MSU Environmental Health and Safety – (517) 353-8956

Student Services Photo Log



HA #19 – Asbestos-containing 12" x 12" beige floor tile with green and rust streaks and associated non asbestos-containing mastic

For more information contact MSU Environmental Health and Safety – (517) 353-8956

Student Services Photo Log



HA #20 – Non asbestos-containing glue pods from
12" x 12" fiberglass ceiling tile

For more information contact MSU Environmental Health and Safety – (517) 353-8956

Student Services Photo Log



HA #21 – Non asbestos-containing 2' x 2' white lay-in ceiling tile
with pin holes and fissures

For more information contact MSU Environmental Health and Safety – (517) 353-8956

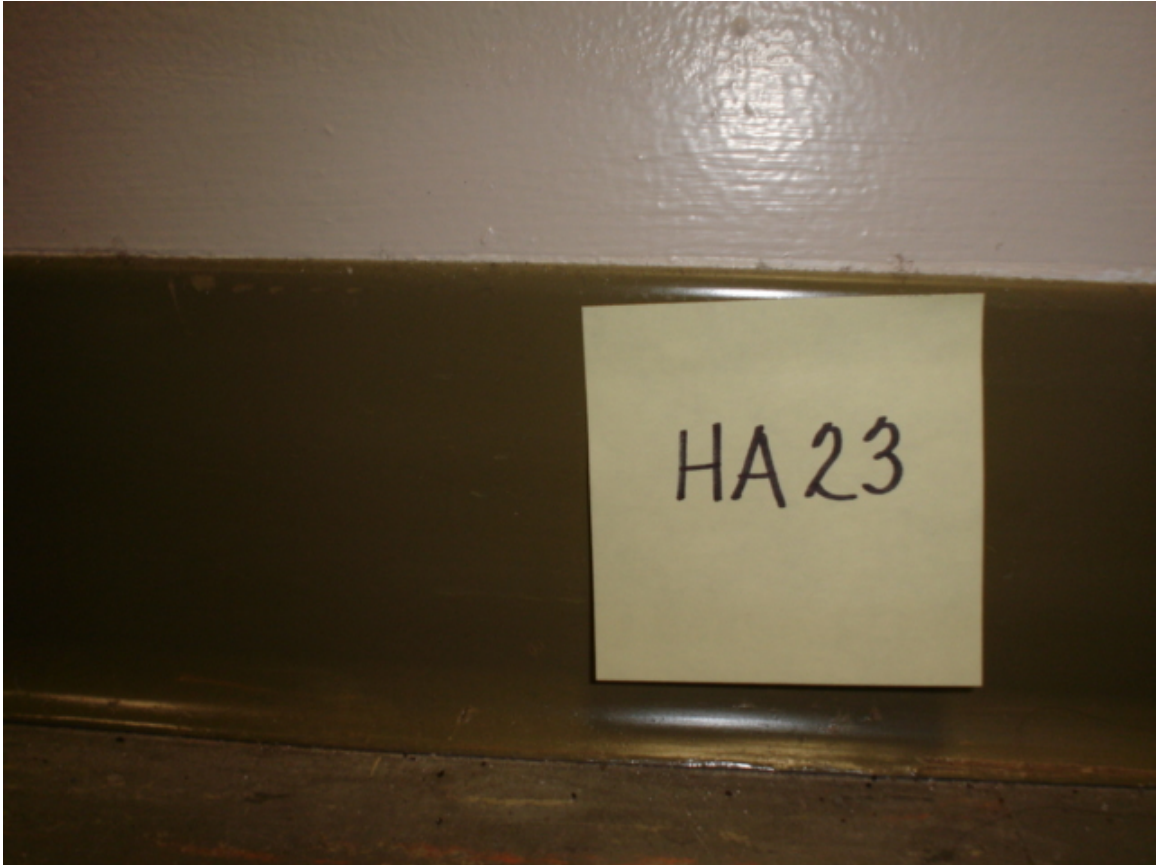
Student Services Photo Log



HA #22 – Asbestos-containing 9" x 9" gray floor tile with pink, cream and gray streaks and associated non asbestos-containing mastic

For more information contact MSU Environmental Health and Safety – (517) 353-8956

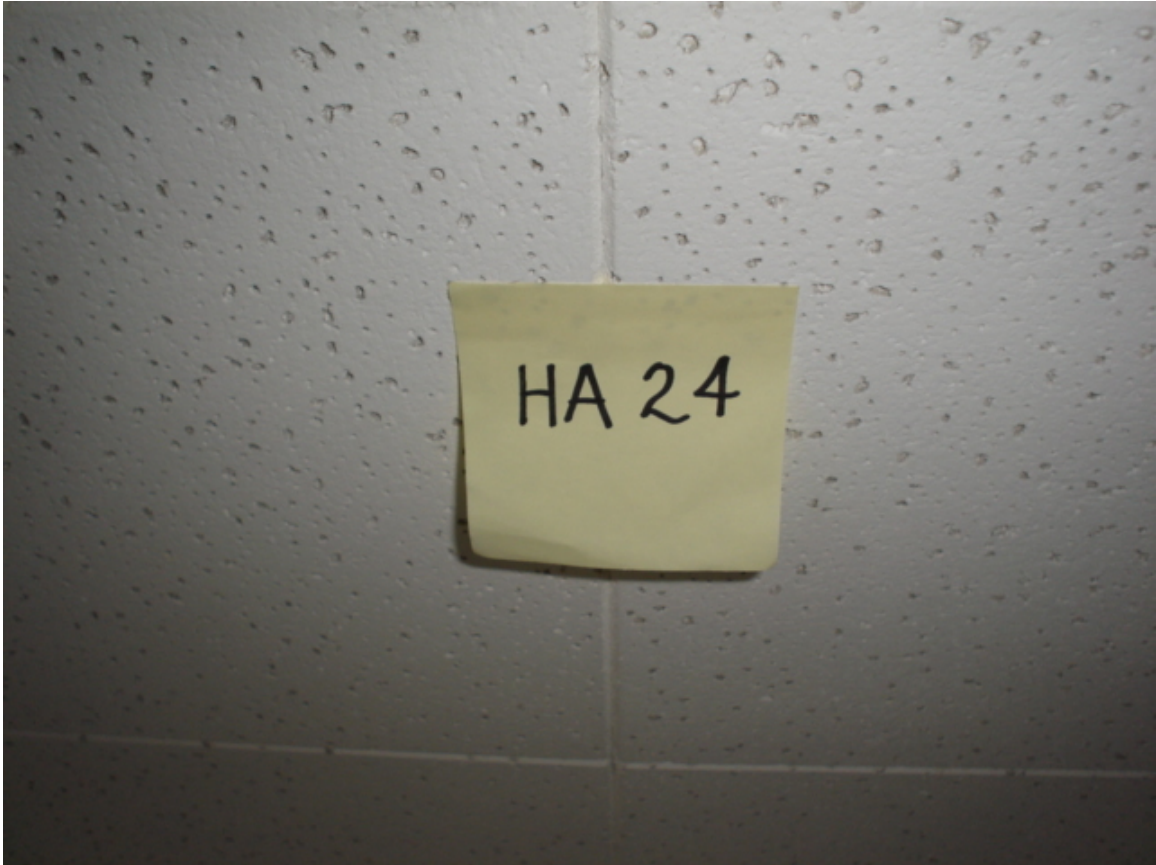
Student Services Photo Log



HA #23 – Non asbestos-containing 4' tan cove molding
and associated mastic

For more information contact MSU Environmental Health and Safety – (517) 353-8956

Student Services Photo Log



HA #24 – Non asbestos-containing 12" x 12" white ceiling tile
with gouges and associated glue pods

For more information contact MSU Environmental Health and Safety – (517) 353-8956

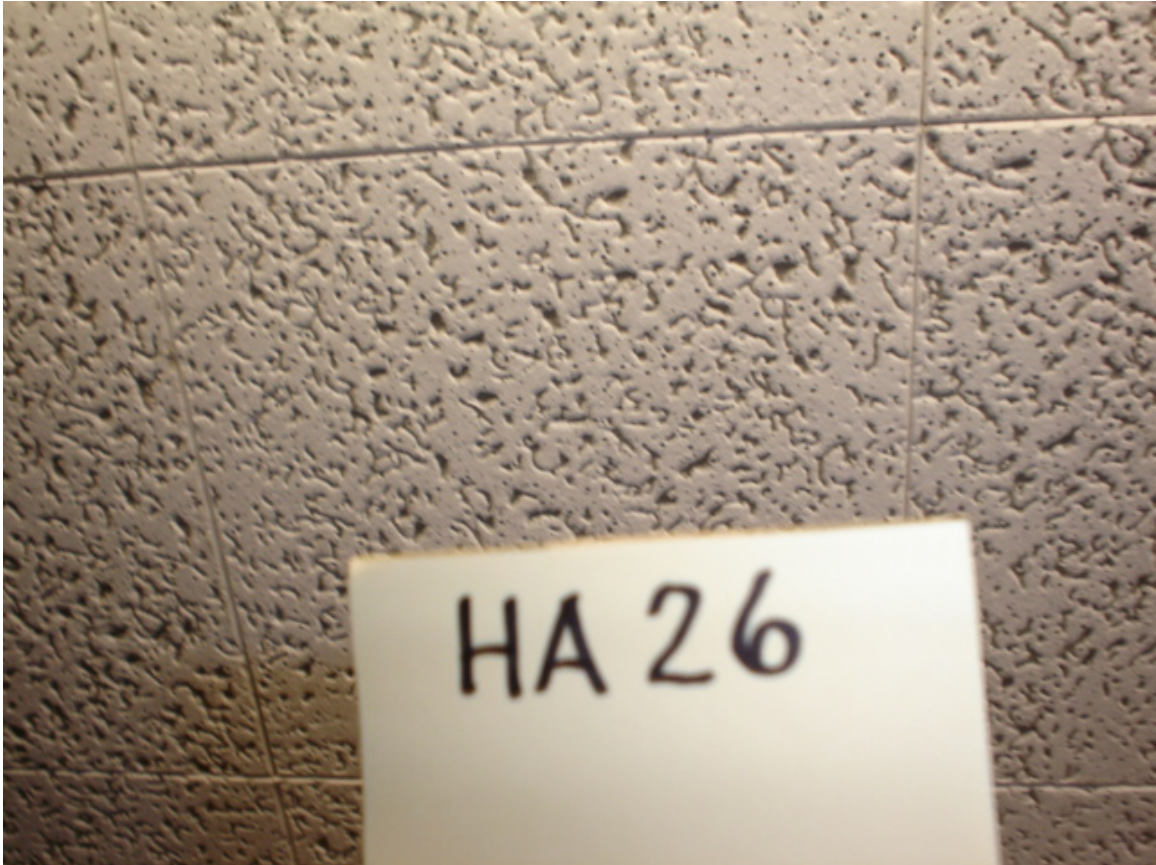
Student Services Photo Log



HA #25 – Non asbestos-containing 4" blue/gray cove molding
and associated mastic

For more information contact MSU Environmental Health and Safety – (517) 353-8956

Student Services Photo Log



HA #26 – Non asbestos-containing 12" x 12" white ceiling tile
with random deep gouges and associated glue pods

For more information contact MSU Environmental Health and Safety – (517) 353-8956

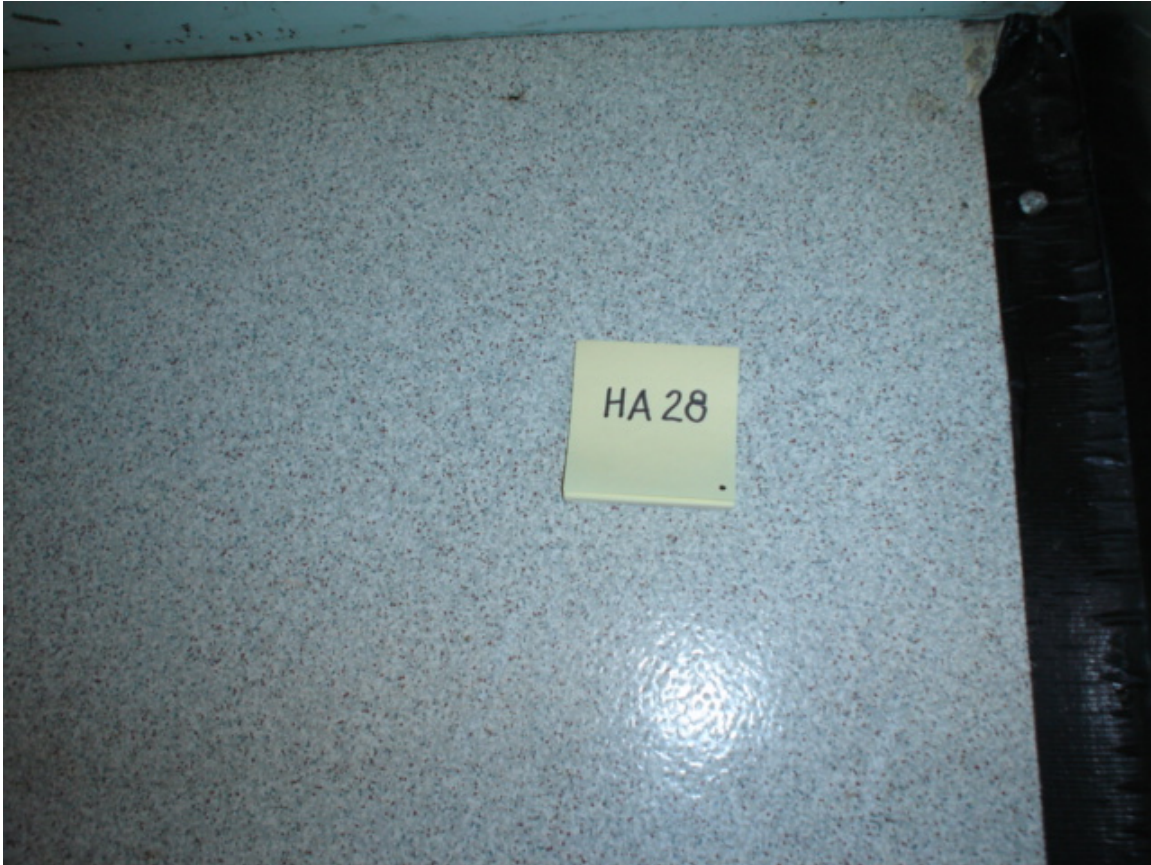
Student Services Photo Log



HA #27 – Non asbestos-containing white sink undercoating

For more information contact MSU Environmental Health and Safety – (517) 353-8956

Student Services Photo Log



HA #28 – Non asbestos-containing cream vinyl flooring
with blue and tan specks and associated mastic

For more information contact MSU Environmental Health and Safety – (517) 353-8956

Student Services Photo Log

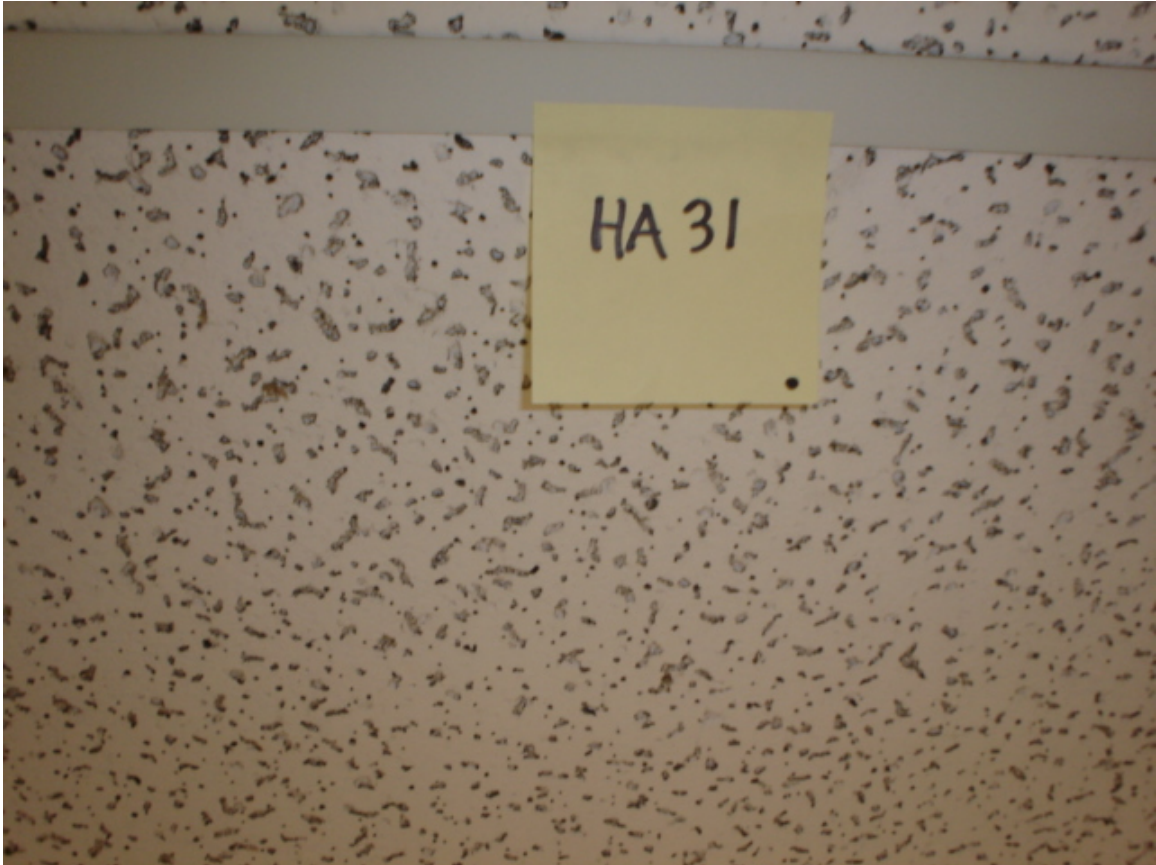


HA #29 – Assumed asbestos-containing window and door frame caulk compound

HA #30 – Assumed asbestos-containing building caulk compound

For more information contact MSU Environmental Health and Safety – (517) 353-8956

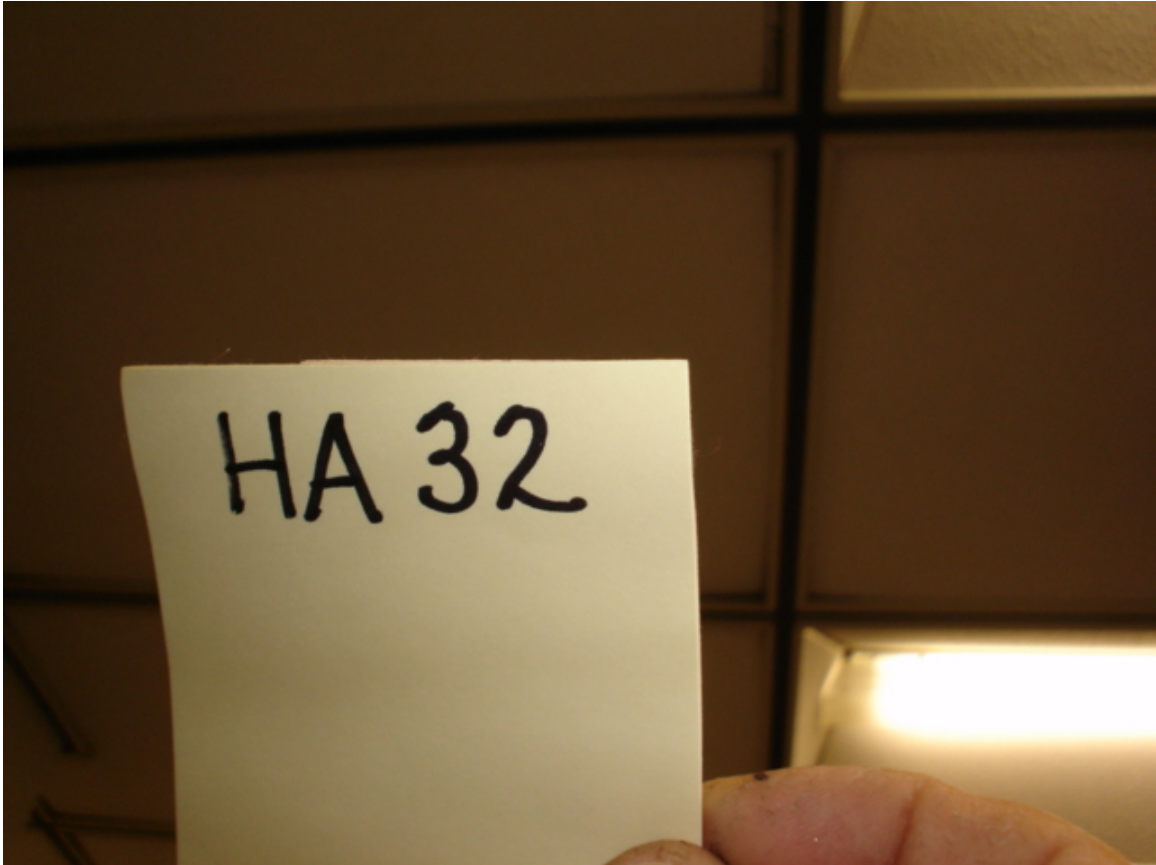
Student Services Photo Log



HA #31 – Non asbestos-containing 2' x 2' white lay-in ceiling tile
with deep gouges

For more information contact MSU Environmental Health and Safety – (517) 353-8956

Student Services Photo Log



HA #32 – Non asbestos-containing 2' x 4' white lay-in ceiling tile
with stipple finish

For more information contact MSU Environmental Health and Safety – (517) 353-8956

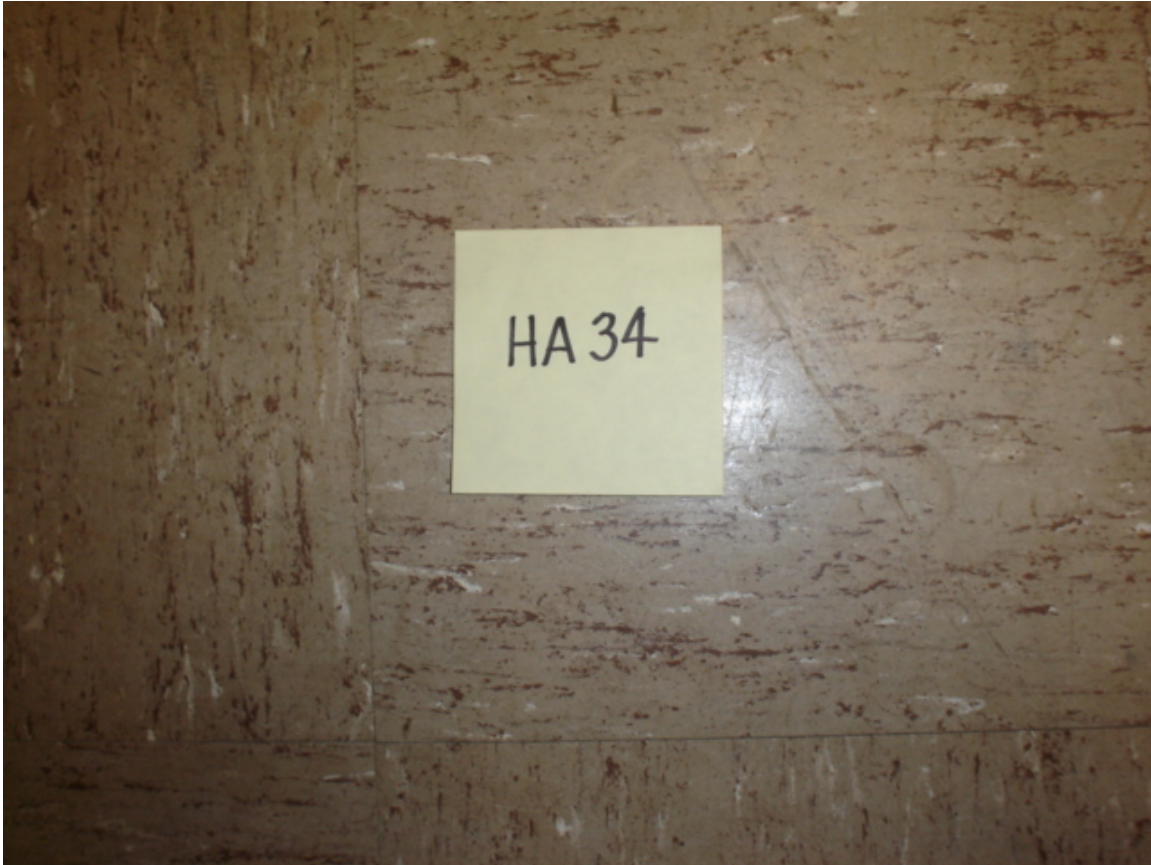
Student Services Photo Log



HA #33 – Asbestos-containing 9" x 9" black floor tile with cream and green streaks and associated non asbestos-containing mastic

For more information contact MSU Environmental Health and Safety – (517) 353-8956

Student Services Photo Log



HA #34 – Asbestos-containing 9" x 9" tan floor tile
with cream and rust streaks and associated mastic

For more information contact MSU Environmental Health and Safety – (517) 353-8956

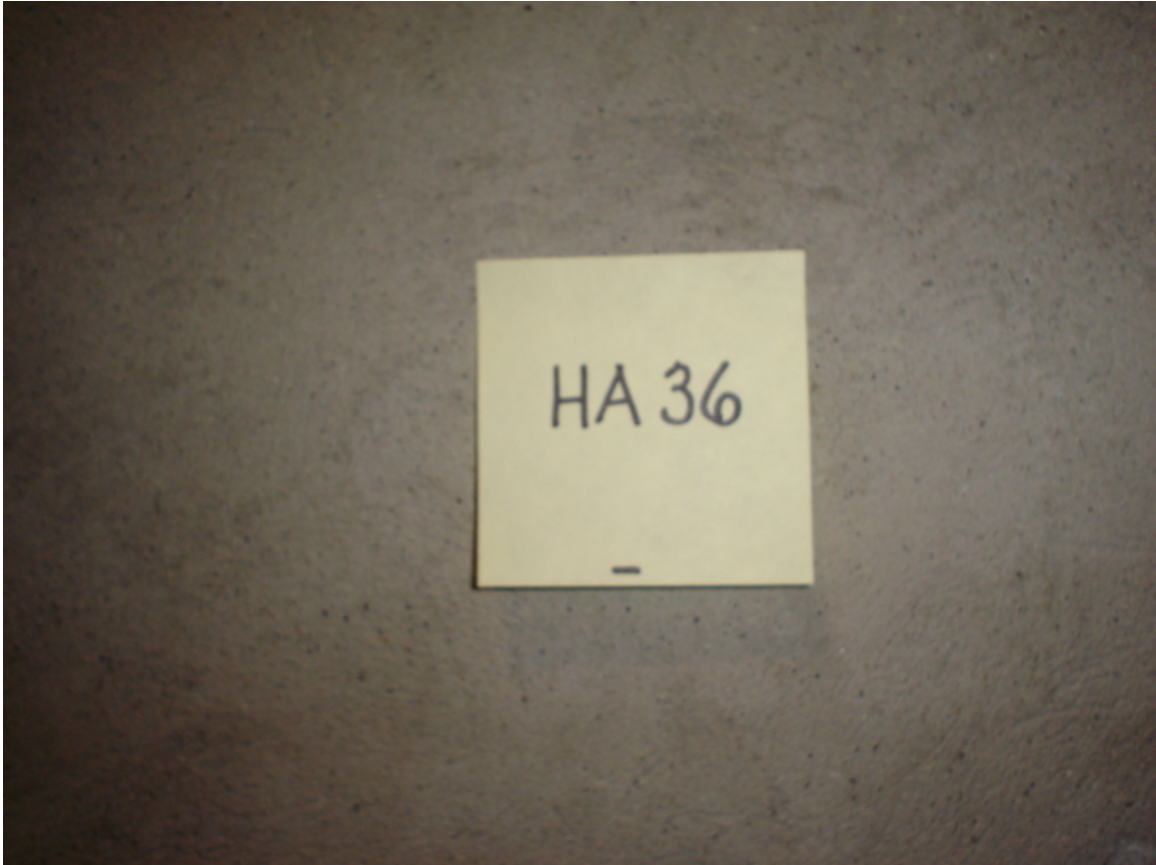
Student Services Photo Log



HA #35 – Non asbestos-containing 6" black cove molding
and associated mastic

For more information contact MSU Environmental Health and Safety – (517) 353-8956

Student Services Photo Log



HA #36 – Non asbestos-containing cementitious plaster

For more information contact MSU Environmental Health and Safety – (517) 353-8956

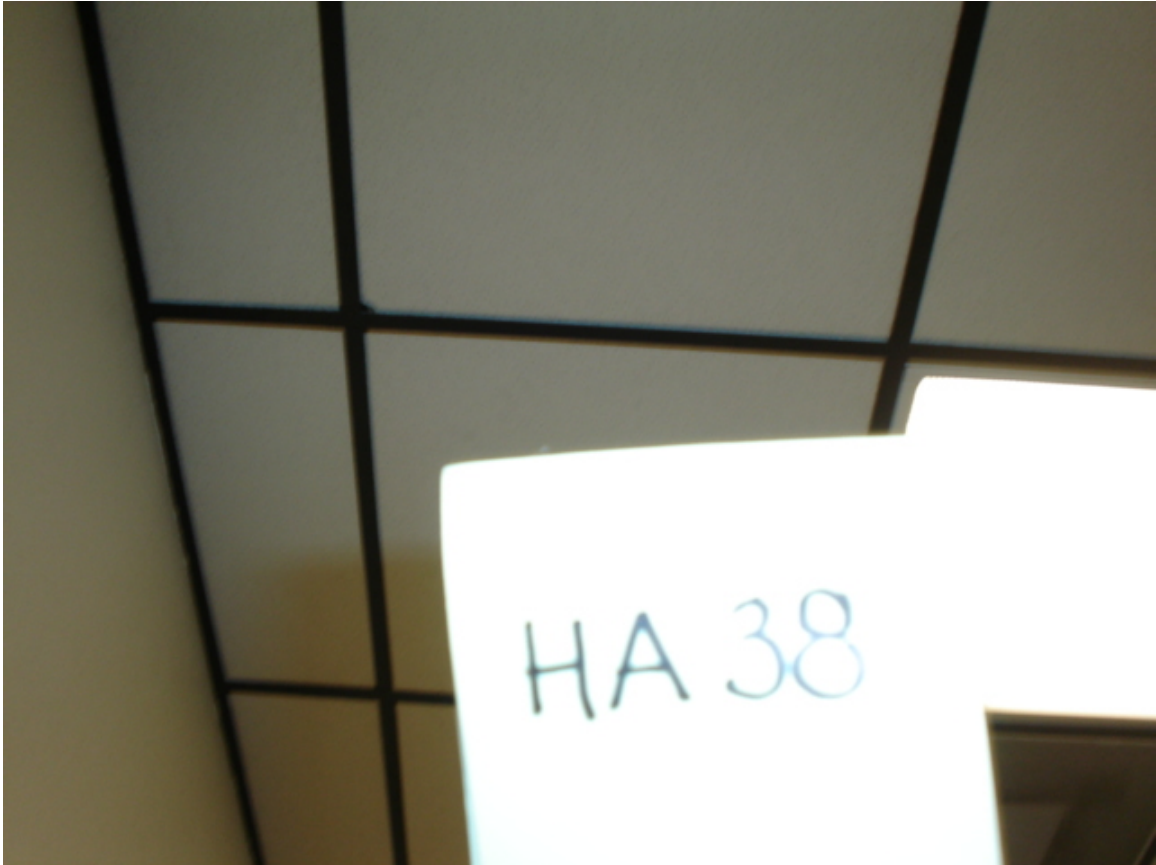
Student Services Photo Log



HA #37 – Non asbestos-containing cream vinyl flooring
with black and cream specks and associated mastic

For more information contact MSU Environmental Health and Safety – (517) 353-8956

Student Services Photo Log



HA #38 – Non asbestos-containing 2' x 2' white lay-in ceiling tile
with pin holes

For more information contact MSU Environmental Health and Safety – (517) 353-8956

Student Services Photo Log



HA #39 – Asbestos-containing 9" x 9" brown floor tile with cream and rust streaks and associated non asbestos-containing mastic

For more information contact MSU Environmental Health and Safety – (517) 353-8956

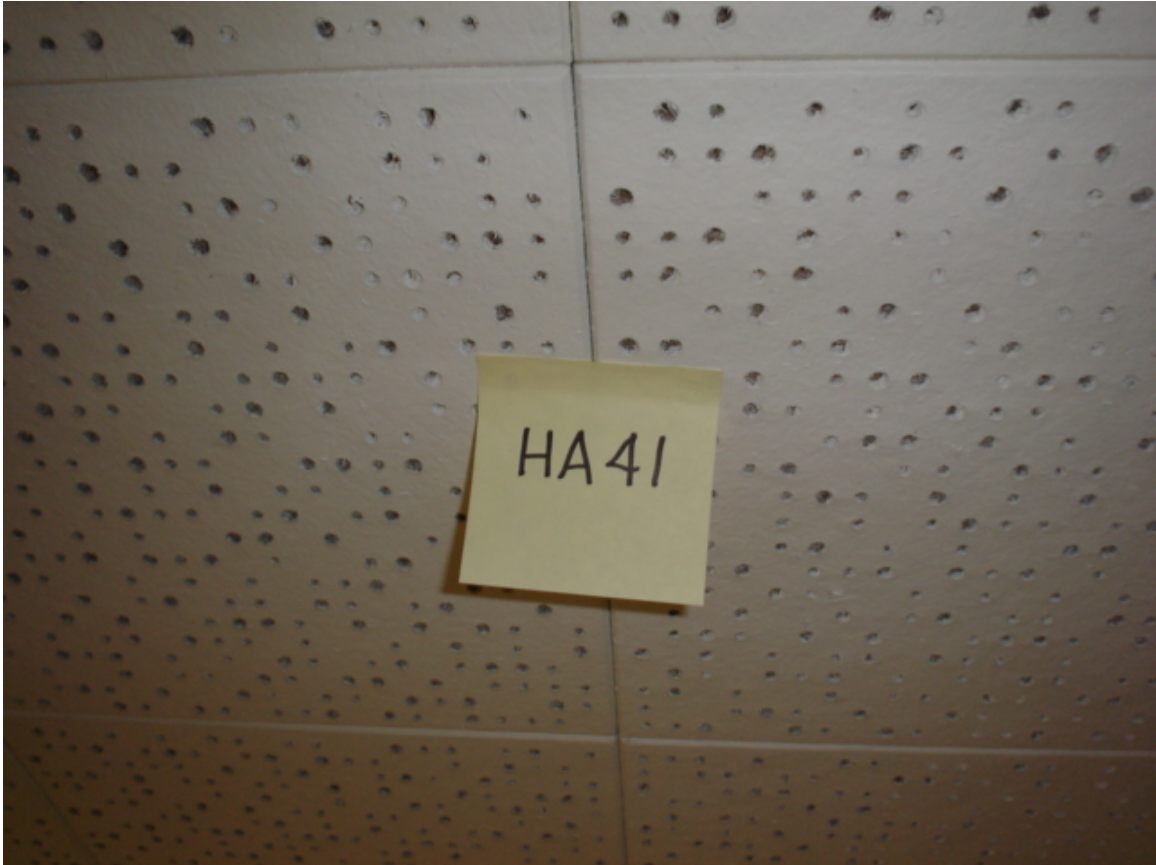
Student Services Photo Log



HA #40 – Asbestos-containing 12" x 12" white floor tile with green and rust streaks and associated non asbestos-containing mastic

For more information contact MSU Environmental Health and Safety – (517) 353-8956

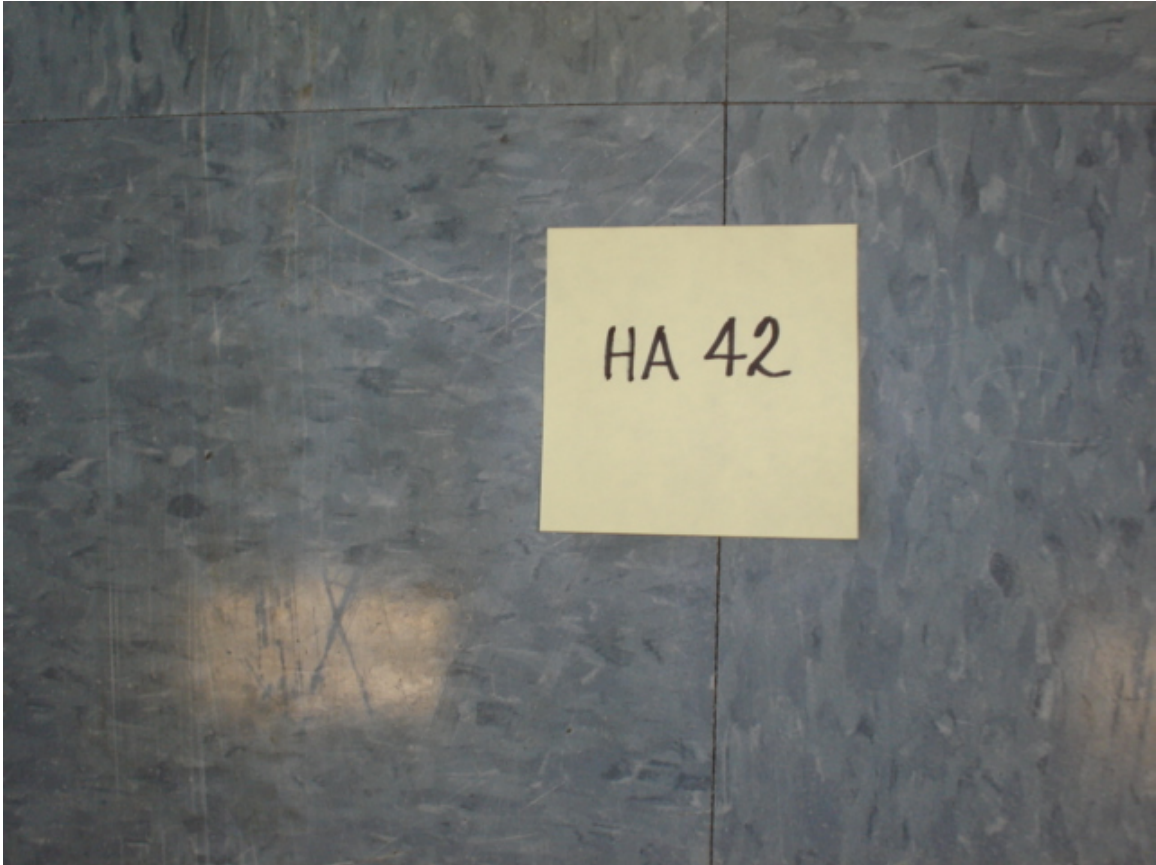
Student Services Photo Log



HA #41 – Non asbestos-containing 12" x 12" white ceiling tile
with random holes and associated glue pods

For more information contact MSU Environmental Health and Safety – (517) 353-8956

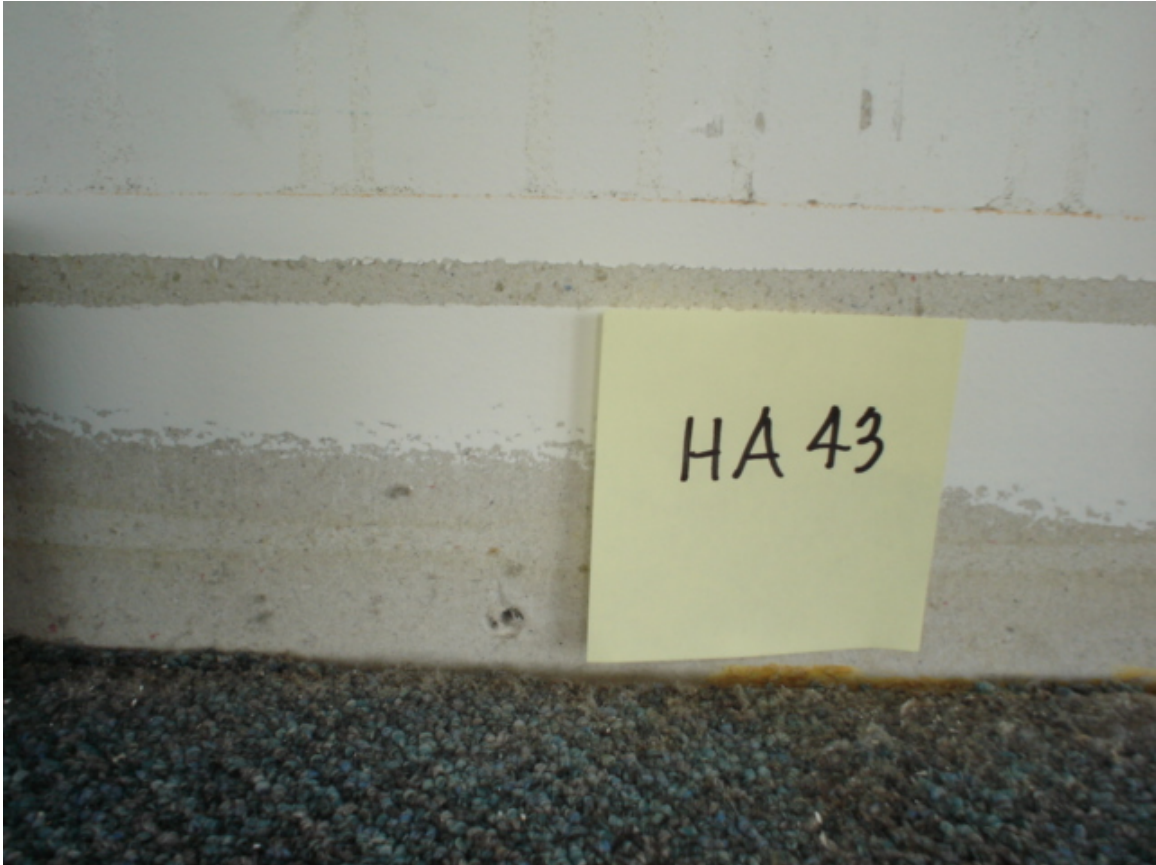
Student Services Photo Log



HA #42 – Non asbestos-containing 12" x 12" blue floor tile
with marble pattern and associated mastic

For more information contact MSU Environmental Health and Safety – (517) 353-8956

Student Services Photo Log



HA #43 – Non asbestos-containing wallboard

For more information contact MSU Environmental Health and Safety – (517) 353-8956

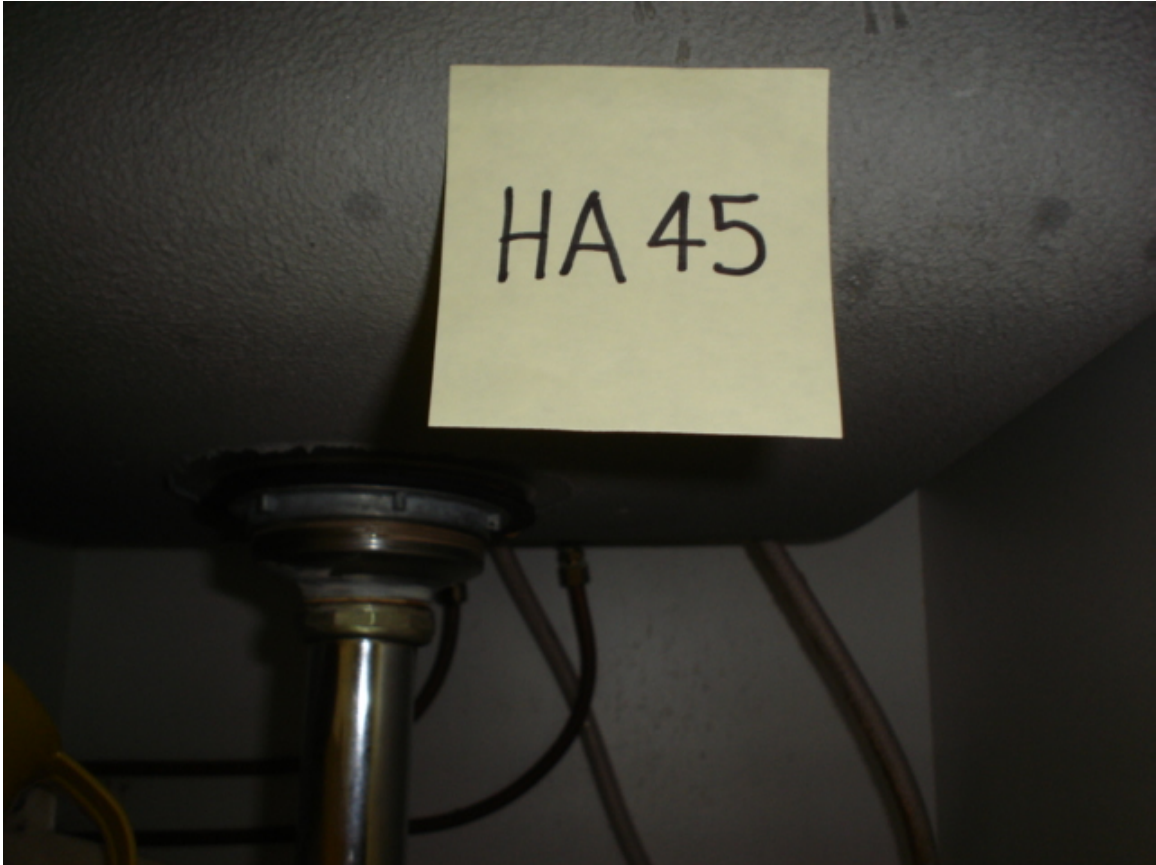
Student Services Photo Log



HA #44 – Non asbestos-containing 12" x 12" white ceiling tile
with pin holes and associated glue pods

For more information contact MSU Environmental Health and Safety – (517) 353-8956

Student Services Photo Log



HA #45 – Non asbestos-containing gray sink undercoating

For more information contact MSU Environmental Health and Safety – (517) 353-8956

Student Services Photo Log



HA #46 – Non asbestos-containing 12" x 12" light green floor tile with marble pattern and associated mastic

For more information contact MSU Environmental Health and Safety – (517) 353-8956

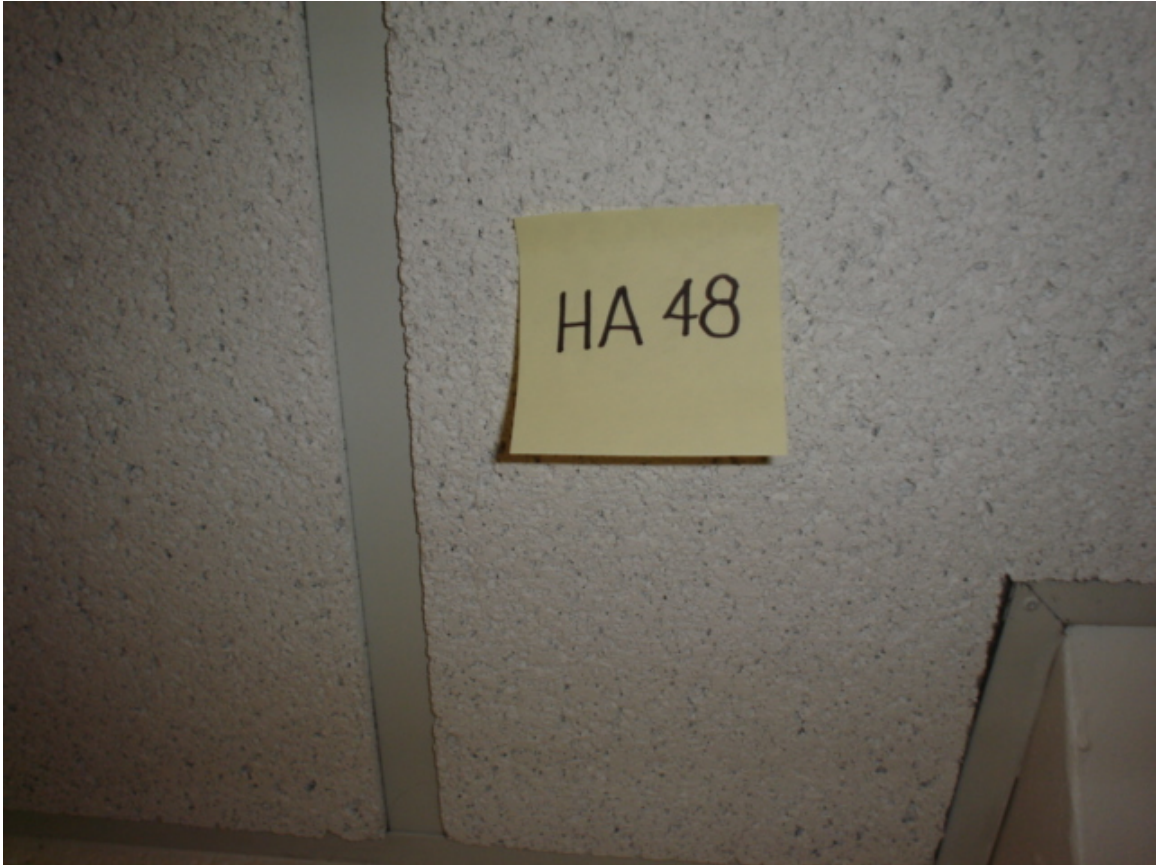
Student Services Photo Log



HA #47 – Asbestos-containing 9" x 9" light gray floor tile with black and cream streaks and associated non asbestos-containing mastic

For more information contact MSU Environmental Health and Safety – (517) 353-8956

Student Services Photo Log



HA #48 – Non asbestos-containing 2' x 2' white drop-in ceiling tile
with pebble face and foil backing

For more information contact MSU Environmental Health and Safety – (517) 353-8956

Student Services Photo Log



HA #49 – Assumed asbestos-containing roofing materials and products

For more information contact MSU Environmental Health and Safety – (517) 353-8956

Student Services Photo Log



HA #52 – Non asbestos-containing 4" cream cove molding
and associated mastic

For more information contact MSU Environmental Health and Safety – (517) 353-8956