

**Photo Log**  
**Michigan State University, Central Services Building**  
**Asbestos Containing Homogeneous Materials List**

1. Mag pipe insulation and fittings, HA#'s 3 and 4.



2. Aircell pipe insulation and fittings, HA#'s 5 and 6.

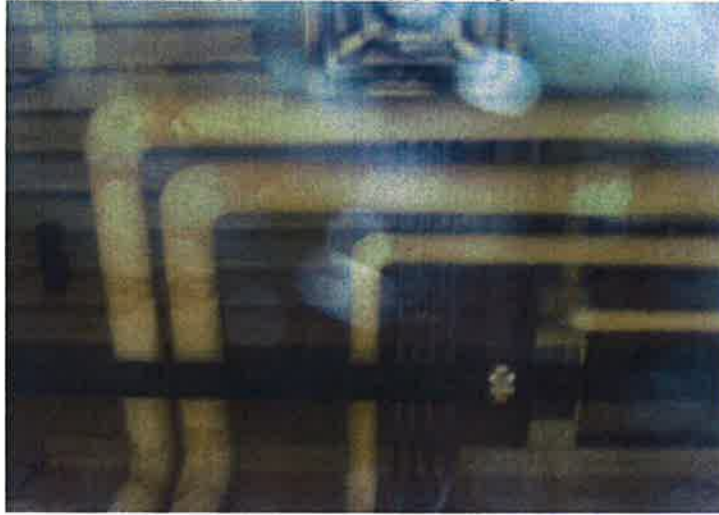


3. Brown wool pipe insulation and associated mud fittings, HA#'s 7 and 8.



**Photo Log**  
**Michigan State University, Central Services Building**  
**Asbestos Containing Homogeneous Materials List**

4. Mud fittings on fiberglass pipe insulation, paper wrapped, HA #9.



5. Mud fittings on fiberglass pipe insulation, canvas wrapped, HA# 10.



6. Hot water holding tank insulation, HA# 11.



**Photo Log**  
**Michigan State University, Central Services Building**  
**Asbestos Containing Homogeneous Materials List**

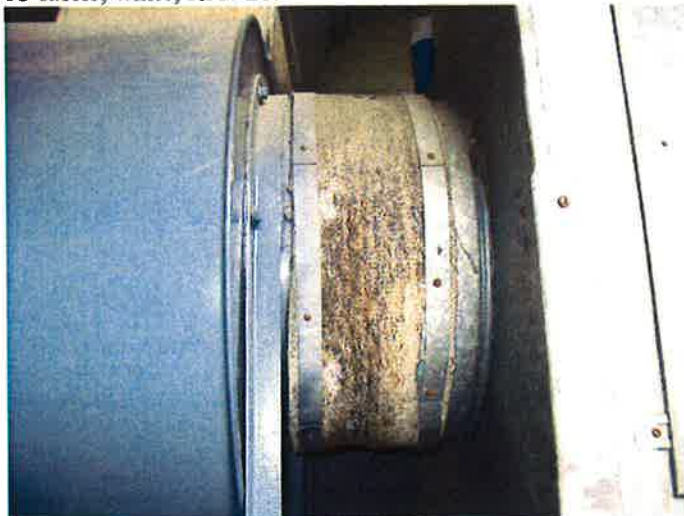
7. Cork and black mastic, HA# 12.



8. Brown mosaic pattern vinyl sheeting and backing, HA# 14.



9. HVAC fabric, white, HA# 20.





**Photo Log**  
**Michigan State University, Central Services Building**  
**Significantly Damaged Materials**

1. Brown Wool Pipe insulation, HA# 7, Rm. 15A.



2. Mag. pipe insulation, HA# 3, Rm. 15A.



3. Mag. pipe insulation, HA# 3, Rm. 15A.



**Photo Log**  
**Michigan State University, Central Services Building**  
**Significantly Damaged Materials**

4. Brown Wool pipe insulation, HA# 7, Rm. 15A.



5. Brown Wool pipe fitting insulation, HA# 8, Rm.15A.

